

**LEAD
RACK
CO.,LTD.**



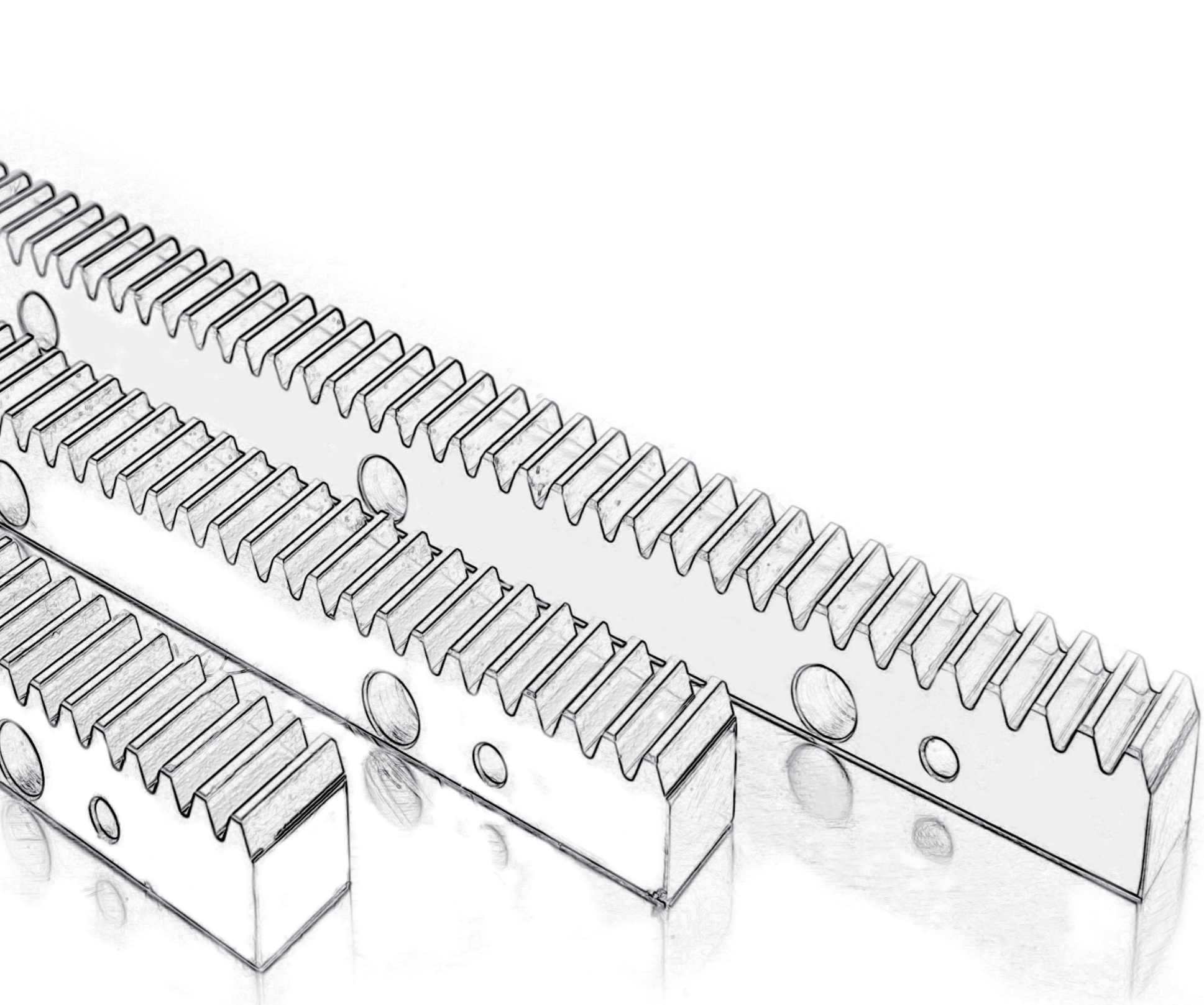
此样本中所有产品型号及参数如有更改恕不另行通告，订货前请与本公司联络确认。

You are welcome to contact with us on the models and parameters of all products in this catalogue, in case that there are some corrections, improvements or updates.

LEADRACK
莱德齿条



**LEAD RACK
CO.,LTD.**
因专注而不同



COMPANG INTRODUCTION

关于莱德



台州莱德齿条有限公司创建于1994年，位于浙东沿海城市——台州，是一家专业从事齿条研发、生产与销售的高新技术型企业。凭借产品的高精度、良好的稳定性、强大的生产供货能力获得了国内外客户的高度认可和持续合作，产品远销海外。

本公司在齿条生产领域有着近20年的积累沉淀，我们拥有强大的研发团队和一大批生产经验丰富的员工，多年来一直不断的学习引进国内外先进的技术及设备，逐步建立和完善了国际领先的产品生产、质量检测等科学的管理系统，充分保证产品的高质量、高性价比。公司生产的齿条精度等级可达德国DIN3962标准5级，一次性最大齿条长度2500mm，可根据客户需求生产1~22模数各种规格直斜齿条。

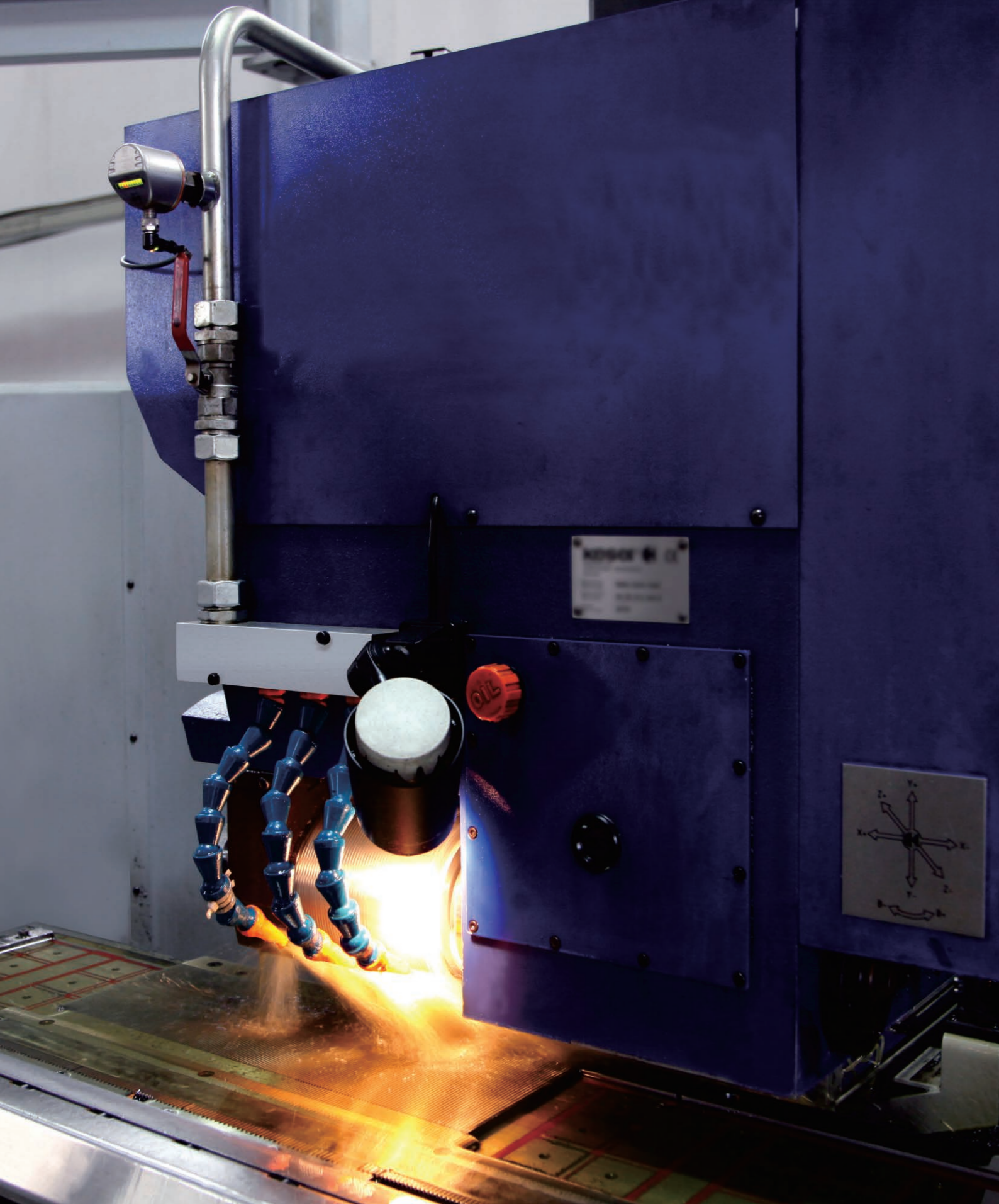
莱德人信奉“诚信共赢、精益求精”的经营理念，坚持以专业的态度、高质量的产品、周到的服务为客户不断创造更高的竞争力，我们真诚的欢迎国内外朋友来厂参观考察，洽谈合作！

Founded in 1994, TAIZHOU LEAD RACK CO.,LTD. locates in the coastal city -- Taizhou in eastern Zhejiang. We are a professional enterprise technically specialized in the research, manufacture and sales of racks. Based on the excellent performance in accuracy, stability and price ratio, we now distribute our racks abroad as well, such as Germany and US.

The company has nearly 20 years of accumulated precipitation in rack production areas, we have a strong R & D team and a large number of rich experience in production staff, over the years has been constantly learning the introduction of domestic and foreign advanced technology and equipment, and gradually establish and improve the management system of international leading production, quality testing and other sciences. To fully ensure the high quality of products, high price.

The accuracy of our racks can meet the German DIN3962 Grade 5, and our maximum racks-processing length can be up to 3200mm once. We can also manufacture various straight and helical racks under your requirements, from 1 to 22 modules in specifications.

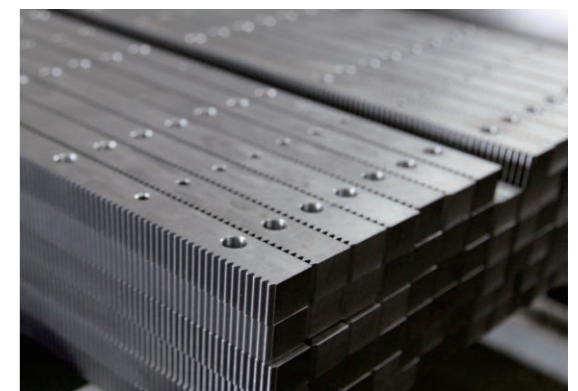
Guided by the motto of “ Integrity and win-win, and hold world with virtue” , Adhere to the professional attitude, high-quality products, attentive service for customers to create a more competitive, we sincerely welcome friends at home and abroad to visit the factory, to discuss cooperation!



LEAD RACK CO.,LTD.

专业生产铣削齿条和磨削精密齿条。
磨削齿条精度可达德国DIN3962标准5级，模数m0.5-m22，长度可达2.5m。齿条有直齿和斜齿，可以齿面淬火，也可以整体渗碳淬火。

We are professional manufacturer of milled racks & ground precision racks. The accuracy of our ground racks can reach DIN3962 Grade 5. The module varies from m0.5-m22. The length can be up to 2.5m. The teeth can be straight or helical. The racks can be teeth hardened or case hardened.





型号说明 Code Description:

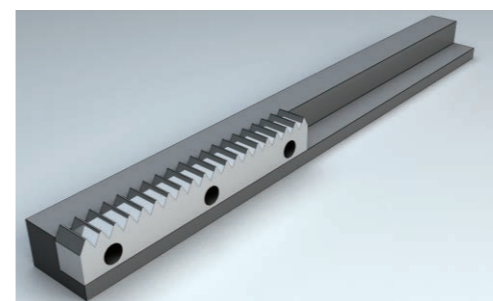
材料 Material	齿型 Rack Type	棒形 Shape	齿面处理 Treatment of Tooth	硬度处理 Hardness	模数 Module	长度 Length	钻孔 Holes	四面研磨 Sides Ground
C ↓ C=S45C	S ↓ S=直齿 Straight	I ↓ T=四角棒 Tetragon	G ↓ G=磨削 Ground	H/Q ↓ H=硬化处理 Hardened	20 ↓ M2	05 ↓ 05=500mm	N ↓ N=无钻孔 No Holes	-G ↓ G=四面研磨 Sides Ground
M=SCM440	H=斜齿 Helical	R=圆棒 Round	M=精铣 Milled	Q=调质 Tempered & quenched 无硬度处理 Without Hardness		10=1,000mm		

齿条装配须知

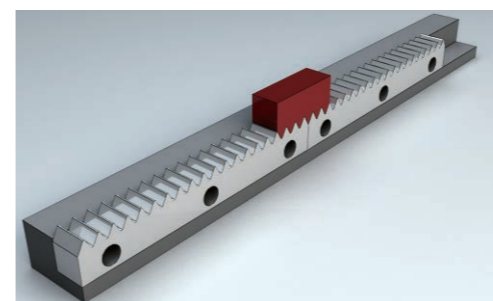
齿条可以对接安装到任意长度。装配时两根齿条之间的间隙需调整至配合齿距。安装齿条需使用定位销。

Assembling Instruction:

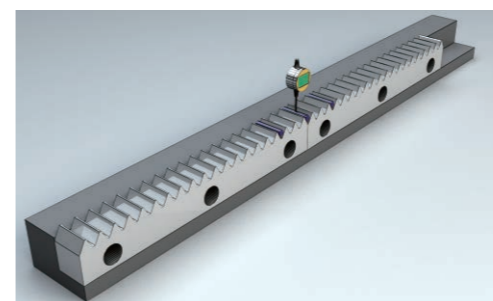
The racks can be connected to any length. The gap between two adjacent racks should be adjusted to match the pitch. Locking pins should be used when assembling the racks.



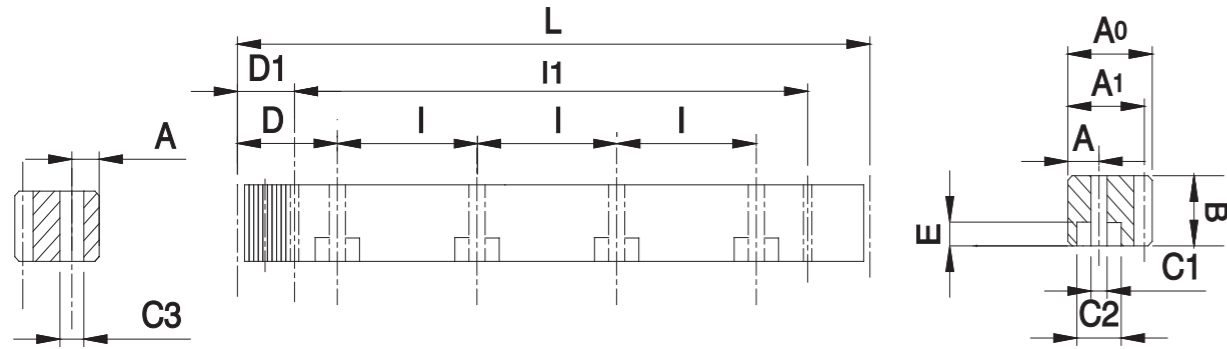
- 1、定位并紧固齿条。
Fix the rack.



- 2、用反向齿规为下一根齿条定位。
Use opposite tooth gauge to fix next rack.



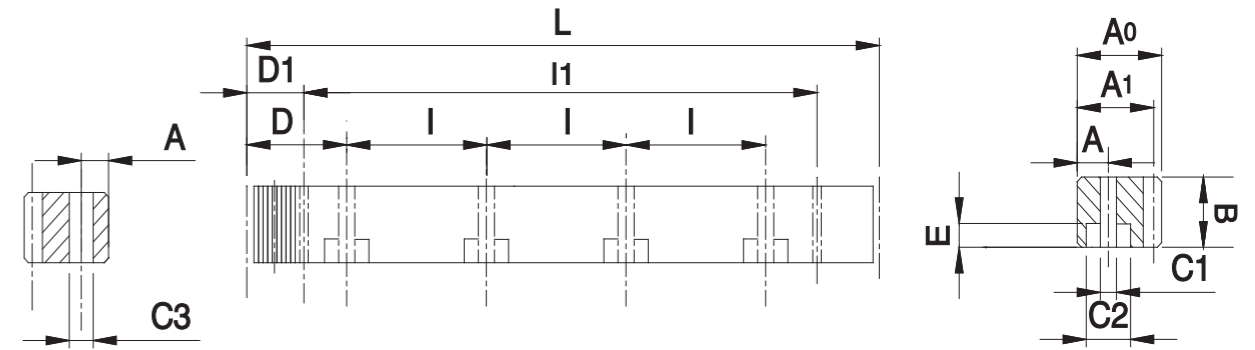
- 3、逐个检查每个接口，用量针检测齿条的平行度。
Check every joint and measure the levelling of the racks with round bars.



单位/Dimension:mm

型号 Code	模数 Module	L	齿数 Tooth No.	B	A0	A1	D	I	孔数 Hole No.	A	C1	C2	E	D1	I1	C3		
CSTGH	010	05	1	499.51	159	15	15	-	-	-	-	-	-	-	-	-		
CSTGH	015	05	1.5	499.51	106	19	19	17.5	62.44	124.88	4	8	7	11	7	29	440.5	5.7
CSTGH	015	10	1.5	999.03	212	19	19	17.5	62.44	124.88	8	8	7	11	7	29	941	5.7
CSTGH	020	05	2	502.65	80	24	24	22	62.83	125.66	4	8	7	11	7	31.3	440.1	5.7
CSTGH	020	10	2	1005.31	160	24	24	22	62.83	125.66	8	8	7	11	7	31.3	942.7	5.7
CSTGH	030	05	3	508.94	54	29	29	26	63.62	127.23	4	9	10	15	9	34.4	440.1	7.7
CSTGH	030	10	3	1017.88	108	29	29	26	63.62	127.23	8	9	10	15	9	34.4	949.1	7.7
CSTGH	040	05	4	502.65	40	39	39	35	62.83	125.66	4	12	10	15	9	37.5	427.7	7.7
CSTGH	040	10	4	1005.31	80	39	39	35	62.83	125.66	8	12	10	15	9	37.5	930.3	7.7
CSTGH	050	05	5	502.65	32	49	49	34	62.83	125.66	4	12	14	20	13	30.1	442.4	11.7
CSTGH	050	10	5	1005.31	64	49	49	34	62.83	125.66	8	12	14	20	13	30.1	945	11.7
CSTGH	060	05	6	508.94	27	59	59	43	63.62	127.23	4	16	18	26	17	31.4	446.1	15.7
CSTGH	060	10	6	1017.88	54	59	59	43	63.62	127.23	8	16	18	26	17	31.4	955.0	15.7
CSTGH	080	05	8	502.65	20	79	79	71	62.83	125.66	4	25	22	33	21	26.6	449.5	19.7
CSTGH	080	10	8	1005.31	40	79	79	71	62.83	125.66	8	25	22	33	21	26.6	952	19.7
CSTGH	100	10	10	1005.31	32	99	99	89	62.83	125.66	8	32	33	48	32	125.7	753.96	19.7
CSTGH	120	12	12	1017.90	27	120	120	108	63.6	127.23	8	40	39	58	38	127.23	763.4	19.7

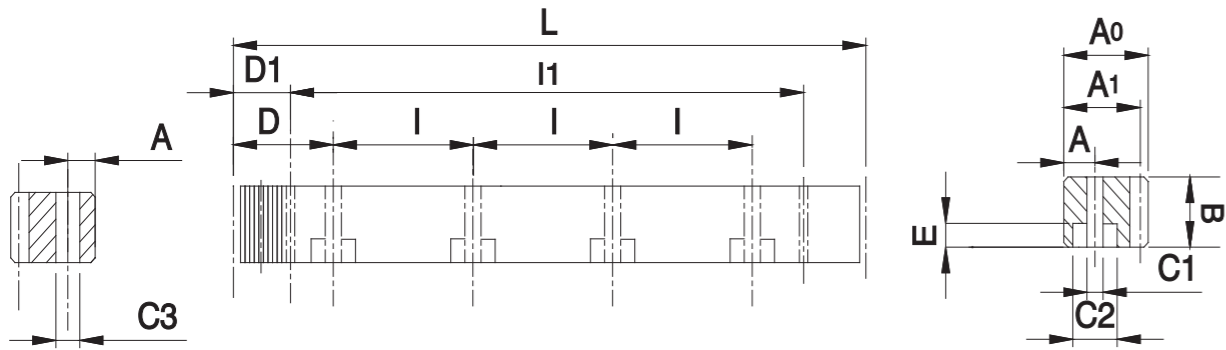
参数说明：	Manufacturing Description:
精度等级：DIN 6h25	Precision Grade: DIN 6h25
材料：(S45C中碳钢) C45	Material: (S45C Medium Carbon Steel) C45
齿型：直齿	Type: Straight Rack
C面处理：磨削	Treatment of Teeth: Ground
硬度处理：高週波，硬度为HRC48~52度	Hardness: High Frequency HRC48~52 degree.
四面研磨：有	Sides Ground: Included
压力角：20度	Pressure Angle: 20 degree
总齿节误差：0.036mm/1000mm	Total Pitch Error:0.036mm/1000mm



单位/Dimension:mm

型号 Code	模数 Module	L	齿数 Teeth No.	B	A0	A1	D	I	孔数 Hole No.	A	C1	C2	E	D1	I1	C3		
CSTMQ	010	05	1	499.51	159	15	15	-	-	-	-	-	-	-	-	-		
CSTMQ	015	05	1.5	499.51	106	19	19	17.5	62.44	124.88	4	8	7	11	7	29	441.5	5.7
CSTMQ	015	10	1.5	999.03	212	19	19	17.5	62.44	124.88	8	8	7	11	7	29	941	5.7
CSTMQ	020	05	2	502.65	80	24	24	22	62.83	125.66	4	8	7	11	7	31.3	440.1	5.7
CSTMQ	020	10	2	1005.31	160	24	24	22	62.83	125.66	8	8	7	11	7	31.3	942.7	5.7
CSTMQ	030	05	3	508.94	54	29	29	26	63.62	127.23	4	9	10	15	9	34.4	440.1	7.7
CSTMQ	030	10	3	1017.88	108	29	29	26	63.62	127.23	8	9	10	15	9	34.4	949.1	7.7
CSTMQ	040	05	4	502.65	40	39	39	35	62.83	125.66	4	12	10	15	9	37.5	427.7	7.7
CSTMQ	040	10	4	1005.31	80	39	39	35	62.83	125.66	8	12	10	15	9	37.5	930.3	7.7
CSTMQ	050	05	5	502.65	32	49	49	34	62.83	125.66	4	12	14	20	13	30.1	442.4	11.7
CSTMQ	050	10	5	1005.31	64	49	49	34	62.83	125.66	8	12	14	20	13	30.1	945.0	11.7
CSTMQ	060	05	6	508.94	27	59	59	43	63.62	127.23	4	16	18	26	17	31.4	446.1	15.7
CSTMQ	060	10	6	1017.88	54	59	59	43	63.62	127.23	8	16	18	26	17	31.4	955.0	15.7
CSTMQ	080	05	8	502.65	20	79	79	71	62.83	125.66	4	25	22	33	21	26.6	449.5	19.7
CSTMQ	080	10	8	1005.31	40	79	79	71	62.83	125.66	8	25	22	33	21	26.6	952	19.7
CSTMQ	100	10	10	1005.31	32	99	99	89	62.83	125.66	8	32	33	48	32	125.7	753.96	19.7

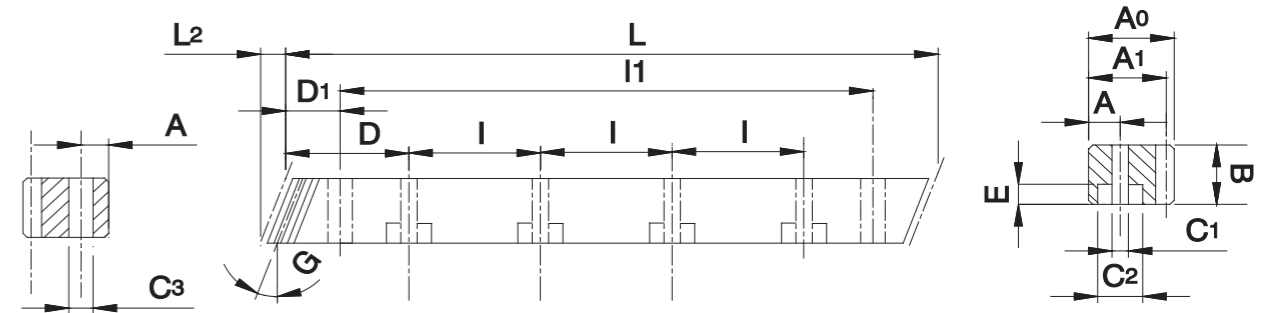
参数说明：	Manufacturing Description:
精度等级：DIN 8e27	Precision Grade: DIN 8e27
材料：S45C	Material: S45C
齿型：直齿	Type: Straight Rack
齿面处理：精铣	Treatment of Teeth: Milled
硬度处理：硬度HRC18~20度	Hardness: HRC18~20 degree
四面研磨：无	Sides Ground: not Included
压力角：20度	Pressure Angle: 20 Degree
总齿节误差：0.1mm/1000mm	Total Pitch Error:0.1mm/1000mm



单位/Dimension:mm

型号 Code	模数 Module	L	齿数 Tooth No.	B	A0	A1	D	I	孔数 Hole No.	A	C1	C2	E	D1	I1	C3	
CSTMH 010	05	1	499.51	159	15	15	14	-	-	-	-	-	-	-	-	-	
CSTMH 015	05	1.5	499.51	106	19	19	17.5	62.44	124.88	4	8	7	11	7	29.0	441.5	5.7
CSTMH 015	10	1.5	999.03	212	19	19	17.5	62.44	124.88	8	8	7	11	7	29.0	941.0	5.7
CSTMH 020	05	2	502.65	80	24	24	22	62.83	125.66	4	8	7	11	7	31.3	440.1	5.7
CSTMH 020	10	2	1005.31	160	24	24	22	62.83	125.66	8	8	7	11	7	31.3	942.7	5.7
CSTMH 030	05	3	508.94	54	29	29	26	63.62	127.23	4	9	10	15	9	34.4	440.1	7.7
CSTMH 030	10	3	1017.88	108	29	29	26	63.62	127.23	8	9	10	15	9	34.4	949.1	7.7
CSTMH 040	05	4	502.65	40	39	39	35	62.83	125.66	4	12	10	15	9	37.5	427.7	7.7
CSTMH 040	10	4	1005.31	80	39	39	35	62.83	125.66	8	12	10	15	9	37.5	930.3	7.7
CSTMH 050	05	5	502.65	32	49	49	34	62.83	125.66	4	12	14	20	13	30.1	442.4	11.7
CSTMH 050	10	5	1005.31	64	49	49	34	62.83	125.66	8	12	14	20	13	30.1	945	11.7
CSTMH 060	05	6	508.94	27	59	59	43	63.62	127.23	4	16	18	26	17	31.4	446.1	15.7
CSTMH 060	10	6	1017.88	54	59	59	43	63.62	127.23	8	16	18	26	17	31.4	955	15.7
CSTMH 080	05	8	502.65	20	79	79	71	62.83	125.66	4	25	22	33	21	26.6	449.45	19.7
CSTMH 080	10	8	1005.31	40	79	79	71	62.83	125.66	8	25	22	33	21	26.6	952	19.7
CSTMH 100	10	10	1005.31	32	99	99	89	62.83	125.66	8	32	33	48	32	125.7	753.96	19.7

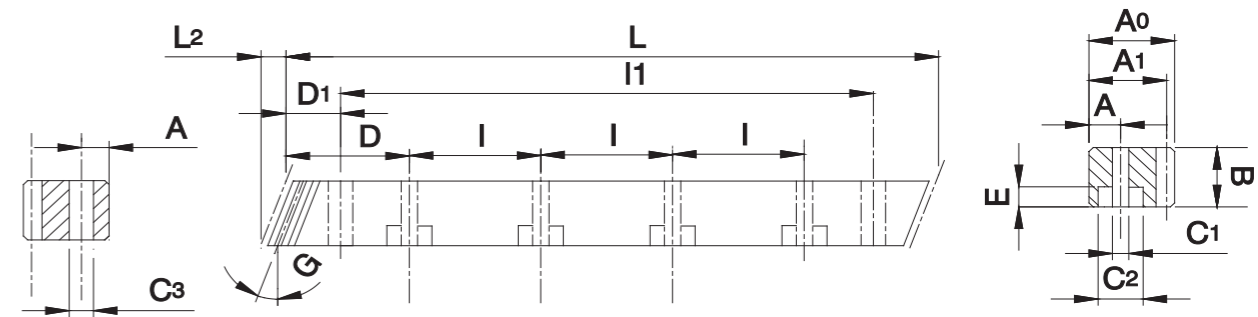
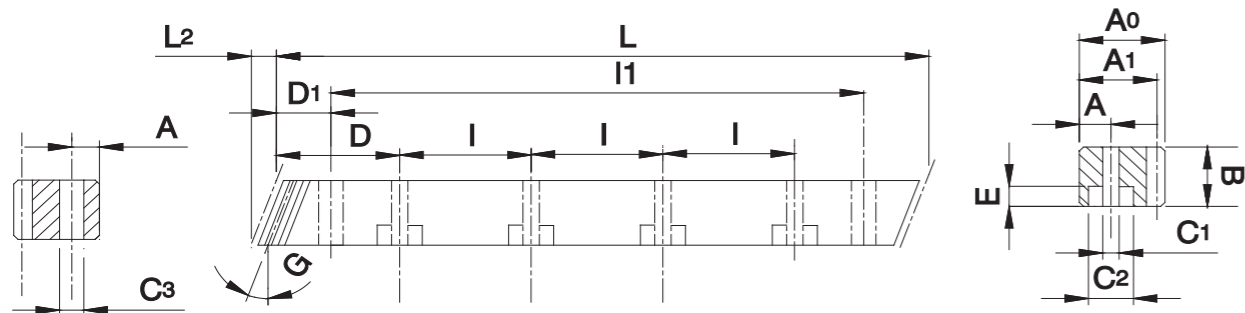
参数说明：	Manufacturing Description:
精度等级：DIN 10e27	Precision grade: DIN 10e27
材料：S45C	Material: S45C
齿型：直齿	Type: Straight Rack
齿面处理：精铣	Treatment of Teeth: Milled
硬度处理：高週波，硬度为HRC48~52度	Hardness: High Frequency HRC 48-52 degree
四面研磨：无	Sides ground: not Included
压力角：20度	Pressure Angle:20 degree
总齿节误差：0.2mm/1000mm	Total pitch Error: 0.2mm/1000mm



单位/Dimension:mm

型号 Code	模数 Module	L	L2	齿数 Tooth No.	B	A0	A1	D	I	孔数 Hole No.	A	C1	C2	E	D1	I1	C3	
CHTGH 010	05	1	500.00	3.14	150	15	15	14	-	-	-	-	-	-	-	-	-	
CHTGH 015	05	1.5	500.00	6.7	100	19	19	17.5	62.50	125	4	8	7	11	7	31.7	436.6	5.7
CHTGH 015	10	1.5	1000.00	6.7	200	19	19	17.5	62.50	125	8	8	7	11	7	31.7	936.6	5.7
CHTGH 020	05	2	500.00	8.5	75	24	24	22	62.50	125	4	8	7	11	7	31.7	436.6	5.7
CHTGH 020	10	2	1000.00	8.5	150	24	24	22	62.50	125	8	8	7	11	7	31.7	936.6	5.7
CHTGH 030	05	3	500.00	10.3	50	29	29	26	62.50	125	4	9	10	15	9	35.0	430.0	7.7
CHTGH 030	10	3	1000.00	10.3	100	29	29	26	62.50	125	8	9	10	15	9	35.0	930.0	7.7
CHTGH 040	05	4	506.67	13.8	38	39	39	35	62.50	125	4	12	10	15	9	33.3	433.0	7.7
CHTGH 040	10	4	1000.00	13.8	75	39	39	35	62.50	125	8	12	10	15	9	33.3	933.4	7.7
CHTGH 050	05	5	500.00	17.4	30	49	49	34	62.50	125	4	12	14	20	13	37.5	425.0	11.7
CHTGH 050	10	5	1000.00	17.4	60	49	49	34	62.50	125	8	12	14	20	13	37.5	925.0	11.7
CHTGH 060	05	6	500.00	20.9	25	59	49	43	62.50	125	4	16	18	26	17	37.5	425.0	15.7
CHTGH 060	10	6	1000.00	20.9	50	59	49	43	62.50	125	8	16	18	26	17	37.5	925.0	15.7
CHTGH 080	05	8	480.00	28.0	18	79	79	71	60.00	120	4	25	22	33	21	120.0	240.0	19.7
CHTGH 080	10	8	960.00	28.0	36	79	79	71	60.00	120	8	25	22	33	21	120.0	720.0	19.7
CHTGH 100	10	10	1000.00	35.11	30	99	99	89	62.50	125	8	32	33	48	32	125.0	750.0	19.7
CHTGH 120	10	12	1000.00	42.56	25	120	120	108	40.00	125	8	40	39	58	38	125.0	750.0	19.7

参数说明：	Manufacturing Description:
精度等级：DIN 6h25	Precision Grade: DIN 6h25
材料：S45C	Material: S45C
齿型：斜齿	Type: Helical Rack
齿面处理：磨削	Treatment of Teeth: Ground
硬度处理：高週波，硬度为HRC48~52度	Hardness: Heat treatment:48~52 degree
四面研磨：有	Sides Ground: Included
右旋角：19° 31'42"	Right hand angle: 19° 31'42"
压力角：20度	Pressure angle: 20 Degree
总齿节误差：0.036mm/1000mm	Total Pitch Error: 0.036mm/1000mm



单位/Dimension:mm

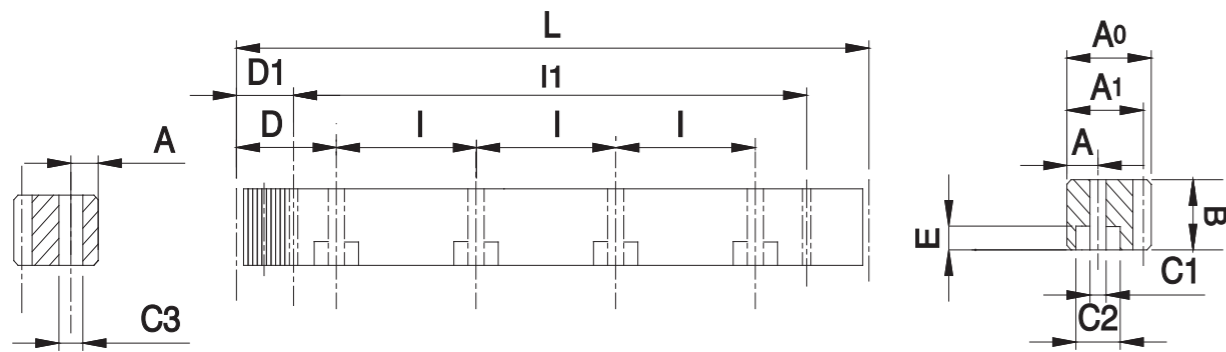
单位/Dimension:mm

型号 Code	模数 Module	L	L2	齿数 Tooth No.	B	A0	A1	D	I	孔数 Hole No.	A	C1	C2	E	D1	I1	C3		
CHTMQ	010	05	1	500.00	3.14	150	15	15	14	-	-	-	-	-	-	-	-		
CHTMQ	015	05	1.5	500.00	6.7	100	19	19	17.5	62.5	125	4	8	7	11	7	31.7	436.6	5.7
CHTMQ	015	10	1.5	1000.00	6.7	200	19	19	17.5	62.5	125	8	8	7	11	7	31.7	936.6	5.7
CHTMQ	020	05	2	500.00	8.9	75	24	24	22	62.5	125	4	8	7	11	7	31.7	436.6	5.7
CHTMQ	020	10	2	1000.00	8.9	150	24	24	22	62.5	125	8	8	7	11	7	31.7	936.6	5.7
CHTMQ	030	05	3	500.00	10.6	50	29	29	26	62.5	125	4	9	10	15	9	35.0	430.0	7.7
CHTMQ	030	10	3	1000.00	10.6	100	29	29	26	62.5	125	8	9	10	15	9	35.0	930.0	7.7
CHTMQ	040	05	4	506.67	14.2	38	39	39	35	62.5	125	4	12	10	15	9	33.3	433.0	7.7
CHTMQ	040	10	4	1000.00	14.2	75	39	39	35	62.5	125	8	12	10	15	9	33.3	933.4	7.7
CHTMQ	050	05	5	500.00	17.4	30	49	39	34	62.5	125	4	12	14	20	13	37.5	425.0	11.7
CHTMQ	050	10	5	1000.00	17.4	60	49	39	34	62.5	125	8	12	14	20	13	37.5	925.0	11.7
CHTMQ	060	05	6	500.00	20.9	25	59	49	43	62.5	125	4	16	18	26	17	37.5	425.0	15.7
CHTMQ	060	10	6	1000.00	20.9	50	59	49	43	62.5	125	8	16	18	26	17	37.5	925.0	15.7
CHTMQ	080	05	8	480.00	28.0	18	79	79	71	60.0	120	4	25	22	33	21	120.0	240.0	19.7
CHTMQ	080	10	8	960.00	28.0	36	79	79	71	60.0	120	8	25	22	33	21	120.0	720.0	19.7
CHTMQ	100	10	10	1000.00	35.11	30	99	99	89	62.5	125	8	32	33	48	32	125.0	750.0	19.7

型号 Code	模数 Module	L	L2	齿数 Tooth No.	B	A0	A1	D	I	孔数 Hole No.	A	C1	C2	E	D1	I1	C3		
CHTMH	010	05	1	500.00	5.35	150	15	15	14	-	-	-	-	-	-	-	-		
CHTMH	015	05	1.5	500.00	6.7	100	19	19	17.5	62.5	125	4	8	7	11	7	31.7	436.6	5.7
CHTMH	015	10	1.5	1000.00	6.7	200	19	19	17.5	62.5	125	8	8	7	11	7	31.7	936.6	5.7
CHTMH	020	05	2	500.00	8.5	75	24	24	22	62.5	125	4	8	7	11	7	31.7	436.6	5.7
CHTMH	020	10	2	1000.00	8.5	150	24	24	22	62.5	125	8	8	7	11	7	31.7	936.6	5.7
CHTMH	030	05	3	500.00	10.3	50	29	29	26	62.5	125	4	9	10	15	9	35.0	430.0	7.7
CHTMH	030	10	3	1000.00	10.3	100	29	29	26	62.5	125	8	9	10	15	9	35.0	930.0	7.7
CHTMH	040	05	4	506.67	13.8	38	39	39	35	62.5	125	4	12	10	15	9	33.3	433.0	7.7
CHTMH	040	10	4	1000.00	13.8	75	39	39	35	62.5	125	8	12	10	15	9	33.3	933.0	7.7
CHTMH	050	05	5	500.00	17.4	30	49	39	34	62.5	125	4	12	14	20	13	37.5	425.0	11.7
CHTMH	050	10	5	1000.00	17.4	60	49	39	34	62.5	125	8	12	14	20	13	37.5	925.0	11.7
CHTMH	060	05	6	500.00	20.9	25	59	49	43	62.5	125	4	16	18	26	17	37.5	425.0	15.7
CHTMH	060	10	6	1000.00	20.9	50	59	49	43	62.5	125	8	16	18	26	17	37.5	925.0	15.7
CHTMH	080	05	8	480.00	28.0	18	79	79	71	60.0	120	4	25	22	33	21	120	240.0	19.7
CHTMH	080	10	8	960.00	28.0	36	79	79	71	60.0	120	8	25	22	33	21	120	720.0	19.7
CHTMH	100	10	10	1000.00	35.11	30	99	99	89	62.5	125	8	32	33	48	32	125	750.0	19.7
CHTMH	120	10	12	1000.00	42.56	25	120	120	108	40	125	8	40	39	58	38	102.5	750.0	19.7

参数说明：	Manufacturing Description:
精度等级：DIN 8e27	Precision Grade: DIN 8e27
材料：S45C	Material: S45C
齿型：斜齿	Type: Helical Rack
齿面处理：精铣	Treatment of Teeth: Milled
硬度处理：调质处理，硬度HRC18~20度	Hardness: Qucnched:HRC18~20 Degree
四面研磨：无	Sides Ground: not Included
右旋角：19° 31'42"	Right Hand Angle: 19° 31'42"
压力角：20度	Pressure angle: 20 degree.
总齿节误差:0.1mm/1000mm	Total Pitch Error:0.1mm/1000mm

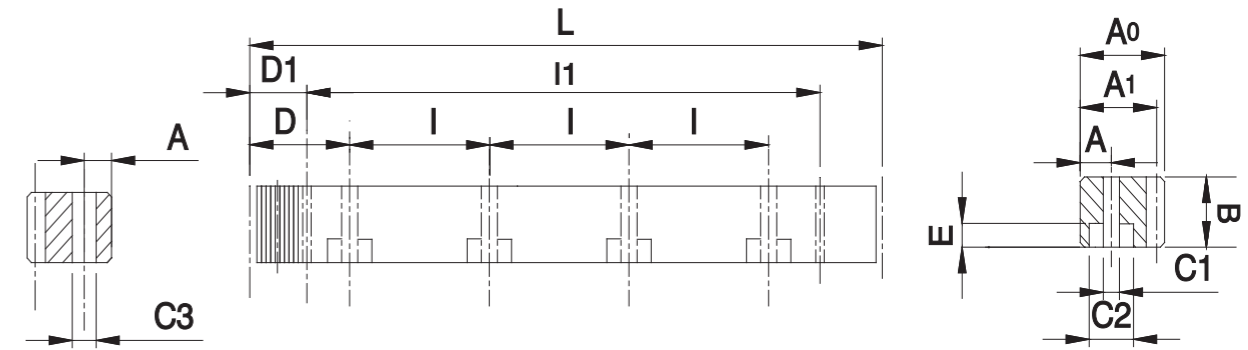
参数说明：	Manufacturing Description:
精度等级：DIN 10e27	Precision Grade: DIN 10e27
材料：S45C	Material: S45C
齿型：斜齿	Type: Helical Rack
齿面处理：精铣	Treatment of Teeth: Milled
硬度处理：高週波,硬度为HRC48~52度	Hardness: High Frequency.HRC48~52 Degree
四面研磨：无	Sides Ground: not included
右旋角：19° 31'42"	Right Hand Angle: 19° 31'42"
压力角：20度	Pressure Angle: 20 Degree
总齿节误差：0.2mm/1000mm	Total Pitch Error:0.2mm/1000mm



单位/Dimension:mm

型号 Code	模数 Module	L	齿数 Tooth No.	B	A0	A1	D	I	孔数 Hole No.	A	C1	C2	E	D1	I1	C3		
MSTGH	010	05	1	499.51	159	15	15	-	-	-	-	-	-	-	-	-		
MSTGH	015	05	1.5	499.51	106	19	19	17.5	62.44	124.88	4	8	7	11	7	29.0	441.5	5.7
MSTGH	015	10	1.5	999.03	212	19	19	17.5	62.44	124.88	8	8	7	11	7	29.0	941.0	5.7
MSTGH	020	05	2	502.65	80	24	24	22	62.83	125.66	4	8	7	11	7	31.3	440.1	5.7
MSTGH	020	10	2	1005.31	160	24	24	22	62.83	125.66	8	8	7	11	7	31.3	942.7	5.7
MSTGH	030	05	3	508.94	54	29	29	26	63.62	127.23	4	9	10	15	9	34.4	440.1	7.7
MSTGH	030	10	3	1017.88	108	29	29	26	63.62	127.23	8	9	10	15	9	34.4	949.1	7.7
MSTGH	040	05	4	502.65	40	39	39	35	62.83	125.66	4	12	10	15	9	37.5	427.7	7.7
MSTGH	040	10	4	1005.31	80	39	39	35	62.83	125.66	8	12	10	15	9	37.5	930.3	7.7
MSTGH	050	05	5	502.65	32	49	49	34	62.83	125.66	4	12	14	20	13	30.1	442.4	11.7
MSTGH	050	10	5	1005.31	64	49	49	34	62.83	125.66	8	12	14	20	13	30.1	945	11.7
MSTGH	060	05	6	508.94	27	59	59	43	63.62	127.23	4	16	18	26	17	31.4	446.1	15.7
MSTGH	060	10	6	1017.88	54	59	59	43	63.62	127.23	8	16	18	26	17	31.4	955.0	15.7
MSTGH	080	05	8	502.65	20	79	79	71	62.83	125.66	4	25	22	33	21	26.6	449.5	19.7
MSTGH	080	10	8	1005.31	40	79	79	71	62.83	125.66	8	25	22	33	21	26.6	952	19.7
MSTGH	100	10	10	1005.31	32	99	99	89	62.83	125.66	8	32	33	48	32	125.7	753.96	19.7

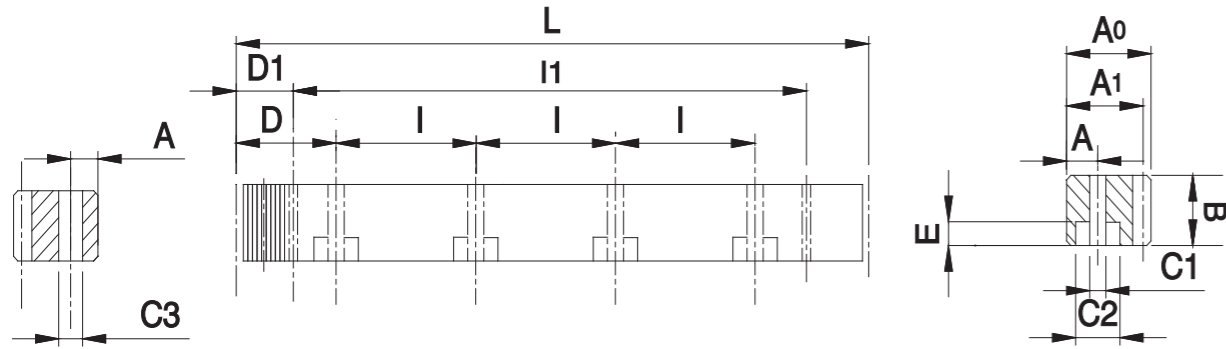
参数说明：	Manufacturing Description:
精度等级：DIN 6h25	Precision Grade: DIN 6h25
材料：(SCM440铬钼合金钢) 42CrMo4	Material: (scm440 Chromium Molybdenum Alloy Steel) 42CrMo4
齿型：直齿	Type: Straight Rack
齿面处理：磨削	Treatment Of Teeth: Ground
硬度处理：高週波，硬度为HRC50~55度	Hardness: Heat Treatment;50-55 Degree
四面研磨：有	Sides Ground: Included
压力角：20度	Pressure Angle: 20 Degree
总齿节误差：0.036mm/1000mm	Total Pitch Error:0.036mm/1000mm



单位/Dimension:mm

型号 Code	模数 Module	L	齿数 Tooth No.	B	A0	A1	D	I	孔数 Hole No.	A	C1	C2	E	D1	I1	C3		
MSTMQ	010	05	1	499.51	159	15	15	14	-	-	-	-	-	-	-	-		
MSTMQ	015	05	1.5	499.51	106	19	19	17.5	62.44	124.88	4	8	7	11	7	29.0	441.5	5.7
MSTMQ	015	10	1.5	999.03	212	19	19	17.5	62.44	124.88	8	8	7	11	7	29.0	941.0	5.7
MSTMQ	020	05	2	502.65	80	24	24	22	62.83	125.66	4	8	7	11	7	31.3	440.1	5.7
MSTMQ	020	10	2	1005.31	160	24	24	22	62.83	125.66	8	8	7	11	7	31.3	942.7	5.7
MSTMQ	030	05	3	508.94	54	29	29	26	63.62	127.23	4	9	10	15	9	34.4	440.1	7.7
MSTMQ	030	10	3	1017.88	108	29	29	26	63.62	127.23	8	9	10	15	9	34.4	949.1	7.7
MSTMQ	040	05	4	502.65	40	39	39	35	62.83	125.66	4	12	10	15	9	37.5	427.7	7.7
MSTMQ	040	10	4	1005.31	80	39	39	35	62.83	125.66	8	12	10	15	9	37.5	930.3	7.7
MSTMQ	050	05	5	502.65	32	49	49	34	62.83	125.66	4	12	14	20	13	30.1	442.4	11.7
MSTMQ	050	10	5	1005.31	64	49	49	34	62.83	125.66	8	12	14	20	13	30.1	945	11.7
MSTMQ	060	05	6	508.94	27	59	59	43	63.62	127.23	4	16	18	26	17	31.4	446.1	15.7
MSTMQ	060	10	6	1017.88	54	59	59	43	63.62	127.23	8	16	18	26	17	31.4	955.0	15.7
MSTMQ	080	05	8	502.65	20	79	79	71	62.83	125.66	4	25	22	33	21	26.6	449.5	19.7
MSTMQ	080	10	8	1005.31	40	79	79	71	62.83	125.66	8	25	22	33	21	26.6	952	19.7
MSTMQ	100	10	10	1005.31	32	99	99	89	62.83	125.66	8	32	33	48	32	125.7	753.96	19.7

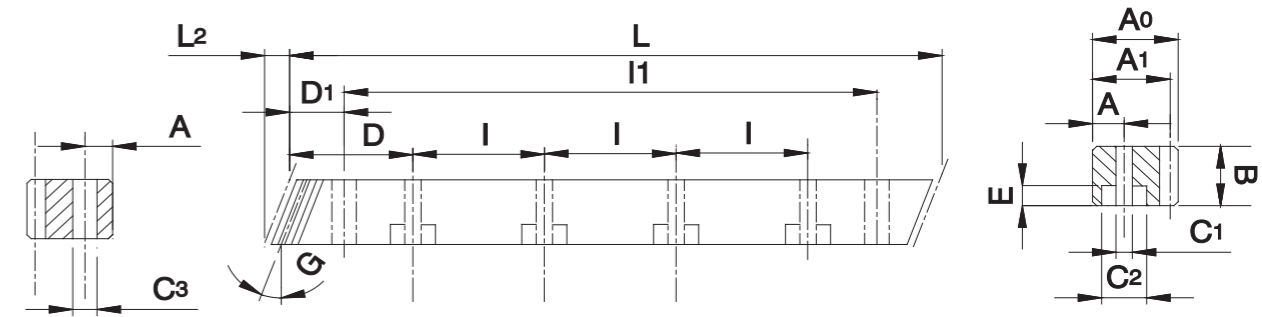
参数说明：	Manufacturing Description:
精度等级：DIN 8e27	Precision Grade: DIN 8e27
材料：(SCM440铬钼合金钢) 42CrMo4	Material: (SCM440 Chromium Molybdenum Alloy Steel) 42CrMo4
齿型：直齿	Type: Straight Rack
齿面处理：精铣	Treatment Of Teeth: Milled
硬度处理：调质处理；硬度HRC21~24度	Hardness: Quenched;HRC21~24 Degree
四面研磨：无	Sides Ground: Not Included
压力角：20度	Pressure Angle: 20 Degree
总齿节误差：0.1mm/1000mm	Total Pitch Error:0.1mm/1000mm



单位/Dimension:mm

型号 Code	模数 Module	L	齿数 Tooth No.	B	A0	A1	D	I	孔数 Hole No.	A	C1	C2	E	D1	I1	C3	
MSTMH 010	05	1	499.51	159	15	15	-	-	-	-	-	-	-	-	-	-	
MSTMH 015	05	1.5	499.51	106	19	19	17.5	62.44	124.88	4	8	7	11	7	29.0	441.5	5.7
MSTMH 015	10	1.5	999.03	212	19	19	17.5	62.44	124.88	8	8	7	11	7	29.0	941.0	5.7
MSTMH 020	05	2	502.65	80	24	24	22	62.83	125.66	4	8	7	11	7	31.3	440.1	5.7
MSTMH 020	10	2	1005.31	160	24	24	22	62.83	125.66	8	8	7	11	7	31.3	942.7	5.7
MSTMH 030	05	3	508.94	54	29	29	26	63.62	127.23	4	9	10	15	9	34.4	440.1	7.7
MSTMH 030	10	3	1017.88	108	29	29	26	63.62	127.23	8	9	10	15	9	34.4	949.1	7.7
MSTMH 040	05	4	502.65	40	39	39	35	62.83	125.66	4	12	10	15	9	37.5	427.7	7.7
MSTMH 040	10	4	1005.31	80	39	39	35	62.83	125.66	8	12	10	15	9	37.5	930.3	7.7
MSTMH 050	05	5	502.65	32	49	49	34	62.83	125.66	4	12	14	20	13	30.1	442.4	11.7
MSTMH 050	10	5	1005.31	64	49	49	34	62.83	125.66	8	12	14	20	13	30.1	945	11.7
MSTMH 060	05	6	508.94	27	59	59	43	63.62	127.23	4	16	18	26	17	31.4	446.1	15.7
MSTMH 060	10	6	1017.88	54	59	59	43	63.62	127.23	8	16	18	26	17	31.4	955.0	15.7
MSTMH 080	05	8	502.65	20	79	79	71	62.83	125.66	4	25	22	33	21	26.6	449.5	19.7
MSTMH 080	10	8	1005.31	40	79	79	71	62.83	125.66	8	25	22	33	21	26.6	952	19.7
MSTMH 100	10	10	1005.31	32	99	99	89	62.83	125.66	8	32	33	48	32	125.7	753.96	19.7

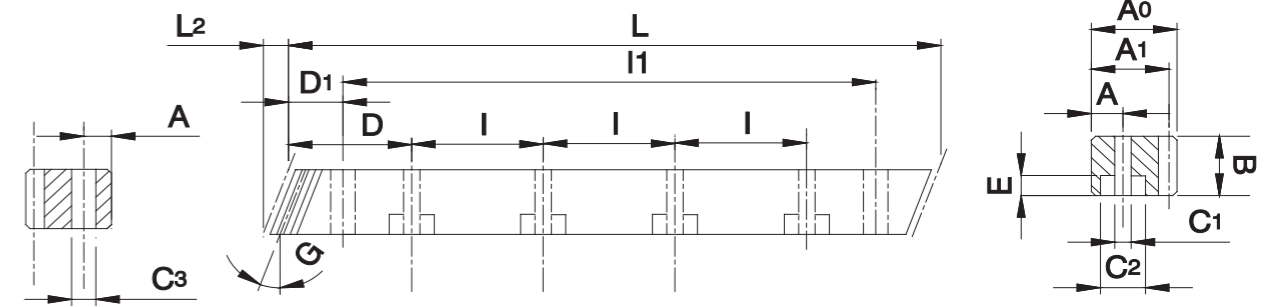
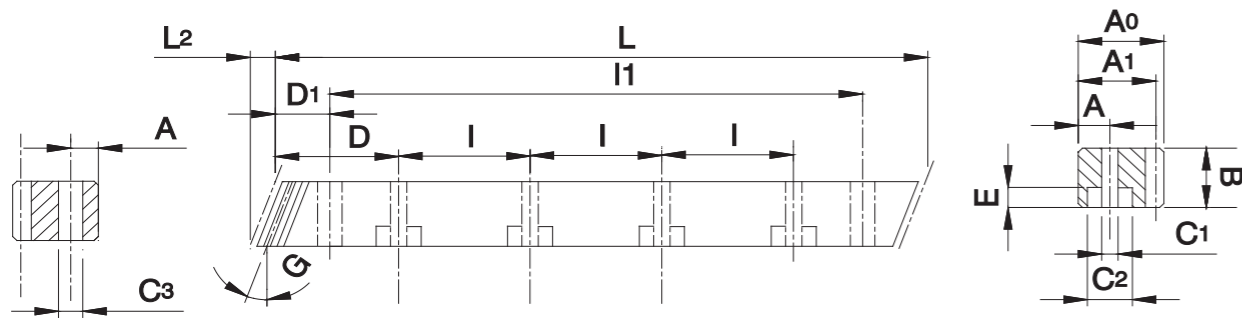
参数说明：	Manufacturing Description:
精度等级：DIN 10e27	Precision Grade: DIN 10e27
材料：(SCM440铬钼合金钢) 42CrMo4	Material: (SCM440 Chromium Molybdenum Alloy Steel) 42CrMo4
齿型：直齿	Type: Straight Rack
齿面处理：精铣	Treatment of Teeth: Milled
硬度处理：高週波，硬度为HRC50~55度	Hardness: High Frequency;HRC50~55Degree
四面研磨：无	Sides ground: Not included
压力角：20度	Pressure Angle: 20 Degree
总齿节误差：0.2mm/1000mm	Total Pitch Error:0.2mm/1000mm



单位/Dimension:mm

型号 Code	模数 Module	L	L2	齿数 Tooth No.	B	A0	A1	D	I	孔数 Hole No.	A	C1	C2	E	D1	I1	C3	
MHTGH 010	05	1	500.00	5.35	150	15	15	14	-	-	-	-	-	-	-	-	-	
MHTGH 015	05	1.5	500.00	6.7	100	19	19	17.5	62.50	125	4	8	7	11	7	31.7	436.6	5.7
MHTGH 015	10	1.5	1000.00	6.7	200	19	19	17.5	62.50	125	8	8	7	11	7	31.7	936.6	5.7
MHTGH 020	05	2	500.00	8.5	75	24	24	22	62.50	125	4	8	7	11	7	31.7	436.6	5.7
MHTGH 020	10	2	1000.00	8.5	150	24	24	22	62.50	125	8	8	7	11	7	31.7	936.6	5.7
MHTGH 030	05	3	500.00	10.3	50	29	29	26	62.50	125	4	9	10	15	9	35.0	430.0	7.7
MHTGH 030	10	3	1000.00	10.3	100	29	29	26	62.50	125	8	9	10	15	9	35.0	930.0	7.7
MHTGH 040	05	4	506.67	13.8	38	39	39	35	62.50	125	4	12	10	15	9	33.3	433.0	7.7
MHTGH 040	10	4	1000.00	13.8	75	39	39	35	62.50	125	8	12	10	15	9	33.3	933.4	7.7
MHTGH 050	05	5	500.00	17.4	30	49	49	34	62.50	125	4	12	14	20	13	37.5	425.0	11.7
MHTGH 050	10	5	1000.00	17.4	60	49	49	34	62.50	125	8	12	14	20	13	37.5	925.0	11.7
MHTGH 060	05	6	500.00	20.9	25	59	49	43	62.50	125	4	16	18	26	17	37.5	425.0	15.7
MHTGH 060	10	6	1000.00	20.9	50	59	49	43	62.50	125	8	16	18	26	17	37.5	925.0	15.7
MHTGH 080	05	8	480.00	28.0	18	79	79	71	60.00	120	4	25	22	33	21	120.0	240.0	19.7
MHTGH 080	10	8	960.00	28.0	36	79	79	71	60.00	120	8	25	22	33	21	120.0	720.0	19.7
MHTGH 100	10	10	1000.00	35.11	30	99	99	89	62.50	125	8	32	33	48	32	125.0	750.0	19.7

参数说明：	Manufacturing Description:
精度等级：DIN 6h25	Precision Grade: DIN6h25
材料：(SCM440铬钼合金钢) 42CrMo4	Material: (SCM440 Chromium Molybdenum Alloy Steel)42CrMo4
齿型：斜齿	Type: Helical Rack
齿面处理：磨削	Treatment of Teeth: Ground
硬度处理：高週波，硬度为HRC50~55度	Hardness: High Frequency.HRC50~55Degree
四面研磨：有	Sides Ground: included
右旋角：19° 31'42"	Right Hand Angle: 19° 31'42"
压力角：20度	Pressure Angle: 20 Degree
总齿节误差:0.036mm/1000mm	Total Pitch Error:0.036mm/1000mm



单位/Dimension:mm

单位/Dimension:mm

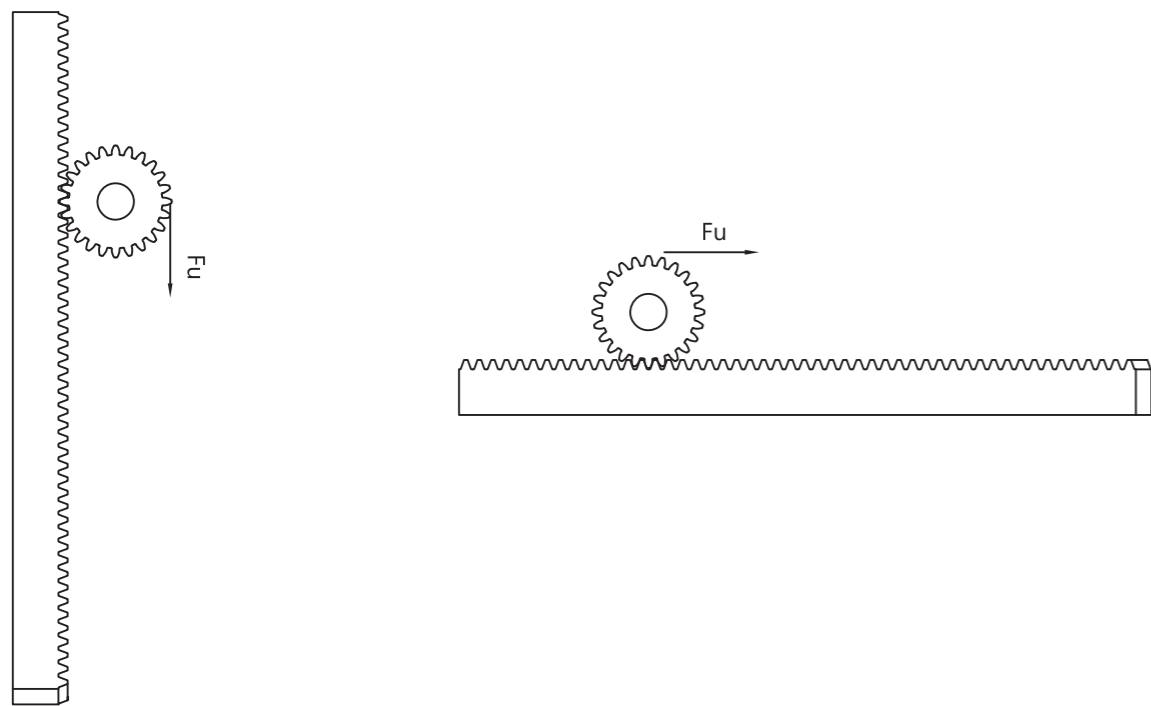
型号 Code	模数 Module	L	L2	齿数 Tooth No.	B	A0	A1	D	I	孔数 Hole No.	A	C1	C2	E	D1	I1	C3		
MHTMQ	010	05	1	500.00	5.35	150	15	15	14	-	-	-	-	-	-	-	-		
MHTMQ	015	05	1.5	500.00	6.7	100	19	19	17.5	62.5	125	4	8	7	11	7	31.7	436.6	5.7
MHTMQ	015	10	1.5	1000.00	6.7	200	19	19	17.5	62.5	125	8	8	7	11	7	31.7	936.6	5.7
MHTMQ	020	05	2	500.00	8.9	75	24	24	22	62.5	125	4	8	7	11	7	31.7	436.6	5.7
MHTMQ	020	10	2	1000.00	8.9	150	24	24	22	62.5	125	8	8	7	11	7	31.7	936.6	5.7
MHTMQ	030	05	3	500.00	10.6	50	29	29	26	62.5	125	4	9	10	15	9	35.0	430.0	7.7
MHTMQ	030	10	3	1000.00	10.6	100	29	29	26	62.5	125	8	9	10	15	9	35.0	930.0	7.7
MHTMQ	040	05	4	506.67	14.2	38	39	39	35	62.5	125	4	12	10	15	9	33.3	433.0	7.7
MHTMQ	040	10	4	1000.00	14.2	75	39	39	35	62.5	125	8	12	10	15	9	33.3	933.4	7.7
MHTMQ	050	05	5	500.00	17.4	30	49	39	34	62.5	125	4	12	14	20	13	37.5	425.0	11.7
MHTMQ	050	10	5	1000.00	17.4	60	49	39	34	62.5	125	8	12	14	20	13	37.5	925.0	11.7
MHTMQ	060	05	6	500.00	20.9	25	59	49	43	62.5	125	4	16	18	26	17	37.5	425.0	15.7
MHTMQ	060	10	6	1000.00	20.9	50	59	49	43	62.5	125	8	16	18	26	17	37.5	925.0	15.7
MHTMQ	080	05	8	480.00	28.0	18	79	79	71	60.0	120	4	25	22	33	21	120.0	240.0	19.7
MHTMQ	080	10	8	960.00	28.0	36	79	79	71	60.0	120	8	25	22	33	21	120.0	720.0	19.7
MHTMQ	100	10	10	1000.00	35.11	30	99	99	89	62.5	125	8	32	33	48	32	125.0	750.0	19.7

型号 Code	模数 Module	L	L2	齿数 Tooth No.	B	A0	A1	D	I	孔数 Hole No.	A	C1	C2	E	D1	I1	C3		
MHTMH	010	05	1	500.00	5.35	150	15	15	14	-	-	-	-	-	-	-	-		
MHTMH	015	05	1.5	500.00	6.7	100	19	19	17.5	62.5	125	4	8	7	11	7	31.7	436.6	5.7
MHTMH	015	10	1.5	1000.00	6.7	200	19	19	17.5	62.5	125	8	8	7	11	7	31.7	936.6	5.7
MHTMH	020	05	2	500.00	8.5	75	24	24	22	62.5	125	4	8	7	11	7	31.7	436.6	5.7
MHTMH	020	10	2	1000.00	8.5	150	24	24	22	62.5	125	8	8	7	11	7	31.7	936.6	5.7
MHTMH	030	05	3	500.00	10.3	50	29	29	26	62.5	125	4	9	10	15	9	35.0	430.0	7.7
MHTMH	030	10	3	1000.00	10.3	100	29	29	26	62.5	125	8	9	10	15	9	35.0	930.0	7.7
MHTMH	040	05	4	506.67	13.8	38	39	39	35	62.5	125	4	12	10	15	9	33.3	433.0	7.7
MHTMH	040	10	4	1000.00	13.8	75	39	39	35	62.5	125	8	12	10	15	9	33.3	933.4	7.7
MHTMH	050	05	5	500.00	17.4	30	49	39	34	62.5	125	4	12	14	20	13	37.5	425.0	11.7
MHTMH	050	10	5	1000.00	17.4	60	49	39	34	62.5	125	8	12	14	20	13	37.5	925.0	11.7
MHTMH	060	05	6	500.00	20.9	25	59	49	43	62.5	125	4	16	18	26	17	37.5	425.0	15.7
MHTMH	060	10	6	1000.00	20.9	50	59	49	43	62.5	125	8	16	18	26	17	37.5	925.0	15.7
MHTMH	080	05	8	480.00	28.0	18	79	79	71	60.0	120	4	25	22	33	21	120	240.0	19.7
MHTMH	080	10	8	960.00	28.0	36	79	79	71	60.0	120	8	25	22	33	21	120	720.0	19.7
MHTMH	100	10	10	1000.00	35.11	30	99	99	89	62.5	125	8	32	33	48	32	125	750.0	19.7

参数说明：	Manufacturing Description:
精度等级：DIN 8e27	Precision Grade: DIN 8e27
材料：(SCM440铬钼合金钢) 42CrMo4	Material: (SCM440 Chromium Molybdenum Alloy Steel) 42CrMo4
齿型：斜齿	Type: Helical Rack
齿面处理：精铣	Treatment of Teeth: Milled
硬度处理：调质处理，硬度为HRC21~24度	Hardness: Quenched; HRC21~24 Degree
四面研磨：无	Sides ground: not included
右旋角：19° 31'42"	Right Hand Angle: 19° 31'42"
压力角：20度	Pressure Angle: 20 Degree
总齿节误差：0.1mm/1000mm	Total pitch error:0.1mm/1000mm

参数说明：	Manufacturing Description:
精度等级：DIN10e27	Precision Grade: DIN10e27
材料：(SCM440铬钼合金钢)42CrMo4	Material: (SCM440 Chromium Molybdenum Alloy Steel)42CrMo4
齿型：斜齿	Type: Helical Rack
齿面处理：精铣	Treatment of Teeth: Milled
硬度处理：高週波,硬度为HRC50~55度	Hardness: High Frequency.HRC50~55 Degree
四面研磨：无	Sides Ground: not included
右旋角：19° 31'42"	Right Hand Angle: 19° 31'42"
压力角：20度	Pressure Angle: 20 Degree
总齿节误差：0.2mm/1000mm	Total Pitch Error: 0.2mm/1000mm

齿条传动形式 (selection rack and pinion drive)



上升/下降(lift/lower)
 $F_u = m \cdot g + m \cdot a$

水平(drive)
 $F_u = m \cdot g \cdot \mu + m \cdot a$

名称 (Description)	公式 (formula)	单位 (dimension)
加速度 (Acceleration)	$a = \frac{v}{t} = \frac{2 \cdot s}{t^2}$	m/s ²
速度 (Speed)	$v = \frac{s}{t} = \sqrt{2 \cdot a \cdot s}$	m/s
距离 (Distance)	s	m
时间 (Time)	t	s
转速 (Rpm)	$n = \frac{v \cdot 60}{\pi \cdot d_0}$	1/min
分度圆直径 (Pitch Diameter)	d ₀	mm
扭矩 (Torque)	$M = \frac{F_u \cdot d_0}{2000}$	Nm
功率 (Power)	$P = \frac{M \cdot n}{9550} = \frac{F_u \cdot n \cdot d_0}{19100}$	kw

使用系数	1.0	Application factor:	1.0
齿间连接安全系数	1.0	Safety Factor of Teeth Connection	1.0
防齿裂安全系数系数	1.4	Safety Factor of prevention of teeth cracking	1.4
使用寿命	20,000h	Life Time 20,000 hrs	20,000h

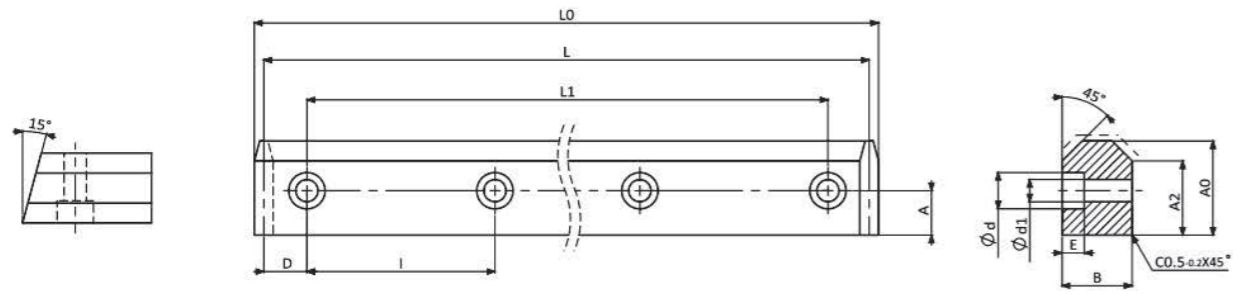


导轨齿条目录
 Content of Guideway Racks

型号 Code	材料 Material	齿条齿型 Type	齿条齿型 Type	棒型 Shape	齿面处理 Teeth Treatment	硬度处理 Hardness	周节 CP	精度等级 Grade DIN
MSVGH-CP	SCM440	直齿 Straight	V型导轨齿条 V Type Guideway Rack	六角棒 Hexgan	齿研 Teeth Ground	热处理 Hardened HRC 53°-58°	5,7,5,10	DIN6
MNVGH-00	SCM440	N/A	V型导轨 V Type Guideway	六角棒 Hexgan	研磨 Ground	热处理 Hardened HRC 53°-58°	N/A	DIN6
MSTGH-CP	SCM440	直齿 Straight	平轨导轨 Guideway Rack	四角棒 Tetragon	齿研 Teeth Ground	热处理 Hardened HRC 53°-58°	5,7,5,10	DIN6
MNTGH-00	SCM440	N/A	平面导轨 Guideway	四角棒 Tetragon	研磨 Ground	热处理 Hardened HRC 53°-58°	N/A	DIN6

导轨齿条型号说明
 Guideway Rack Code Instruction

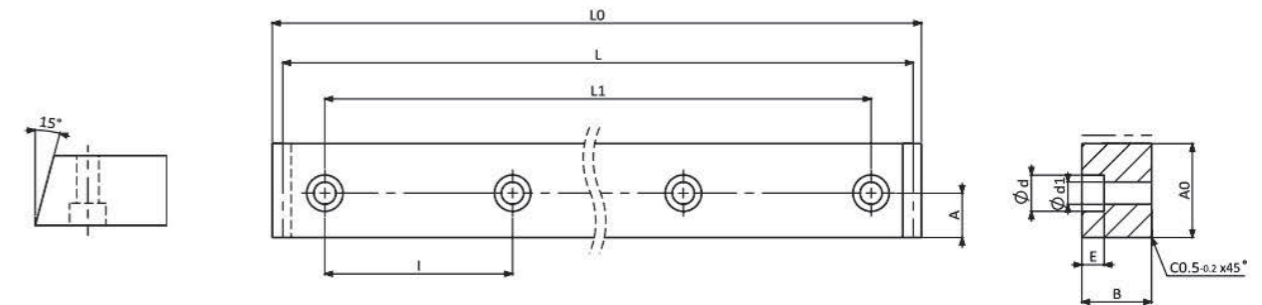
材料 Material	齿型 Type	棒型 Shape	齿面处理 Teeth Treatment	硬度处理 Hardness	周节 Circular Pitch	长度 Length	等级 Grade
M	S/H	V/T	G	H	CP	10	Q6
M=SCM440	S=直齿 H=斜齿	V=V型棒 T=四角棒(平面)	G=齿研/研磨	H=硬化处理	CP=周节	CP5=1030 CP7.5=1230 CP10=1230	Q=DIN
	S=Straight H=Helical	V=V Type Bar T=Tetragon Bar	G=Teeth Ground /Ground	H=Hardened	CP=Circular Pitch		



单位/Dimension:mm

型号 Code	序号 No	Q	L0	L	L1	B	A0	D	I	ød	ød1	E	A2	KG
MNVGH-00	1	-Q6	1033.89	1030	1000	14.5	24.5	15	100	11	7	6.8	20.0	2.3
MNVGH-00	2	-Q6	1035.23	1030	1000	19.5	29.5	15	100	15	9	9	23.5	3.6
MNVGH-00	3	-Q6	1236.62	1230	1200	24.7	33.0	15	100	15	9	9	25.2	6.3
MNVGH-00	4	-Q6	1239.27	1230	1200	34.6	46.6	15	100	18	11	11	36.7	12.5

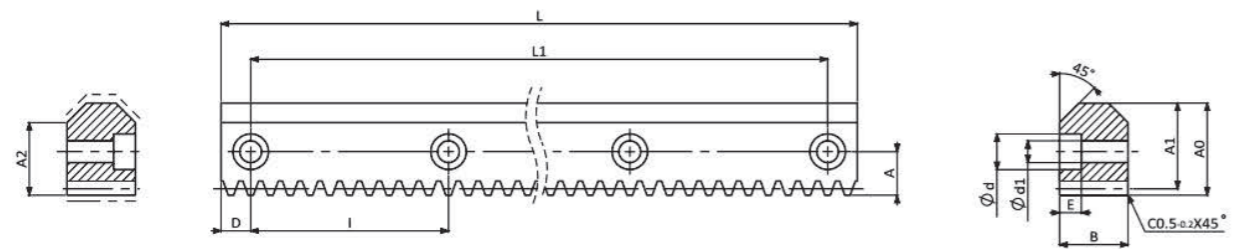
系列MNVGH-00-Q6 V型研磨导轨	Series MNVGH-00-Q6 V Type Ground Guideway
材料 SCM440 (铬钼合金钢)	Material SCM440 (Chromium Molybdenum Alloy Steel)
硬度 HRC 53°~58°	Hardness HRC 53°~58°
硬化处理后六面研磨	6 Sides Ground after hardening.



单位/Dimension:mm

型号 Code	序号 No	Q	L0	L	L1	B	A0	D	I	ød	ød1	E	KG
MNTGH-00	1	-Q6	1033.89	1030	1000	14.5	24.5	15	100	11	7	6.8	2.5
MNTGH-00	2	-Q6	1035.23	1030	1000	19.5	29.5	15	100	15	9	9	4.0
MNTGH-00	3	-Q6	1236.62	1230	1200	24.7	33.0	15	100	15	9	9	6.8
MNTGH-00	4	-Q6	1239.27	1230	1200	34.6	46.6	15	100	18	11	11	13.4

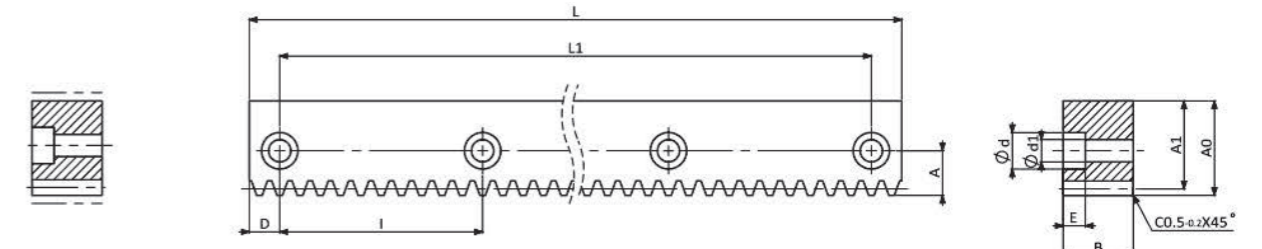
系列MNTGH-00-Q6 研磨平面导轨	Series MNTGH-00-Q6 Ground Guideway
材料 SCM440 (铬钼合金钢)	Material SCM440 (Chromium Molybdenum Alloy Steel)
硬度 HRC 53°~58°	Hardness HRC 53°~58°
硬化处理后四面研磨	4 Sides Ground after hardening.



单位/Dimension:mm

型号 Code	序号 No	Q	周节 CP	L	L1	模数 Module	B	A0	A1	D	I	A	ød	ød1	E	A2	KG
MSVGH-CP 050 10	1	-Q6	5	1030	1000	1.5915	14.5	24.5	22.91	15	100	11.5	11	7	6.8	20.0	2.2
MSVGH-CP 050 10	2	-Q6	5	1030	1000	1.5915	19.5	29.5	27.91	15	100	14.0	15	9	9	23.5	3.5
MSVGH-CP 075 12	1	-Q6	7.5	1230	1200	2.3873	24.7	33.0	30.61	15	100	14.5	15	9	9	25.2	5.8
MSVGH-CP 100 12	1	-Q6	10	1230	1200	3.1831	34.6	46.6	43.42	15	100	18	18	11	11	36.7	11.7

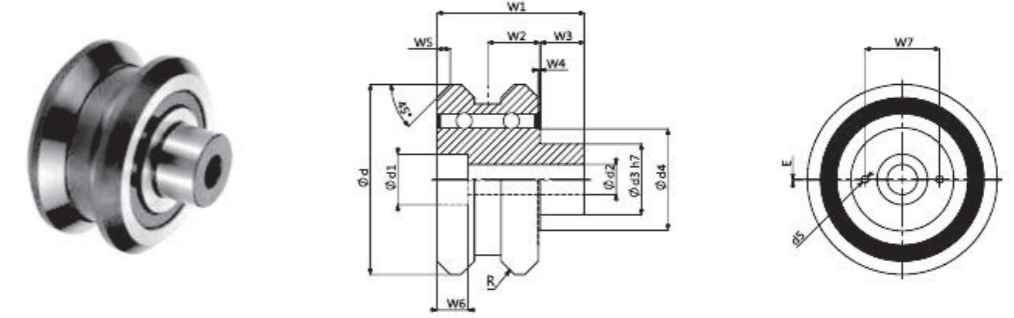
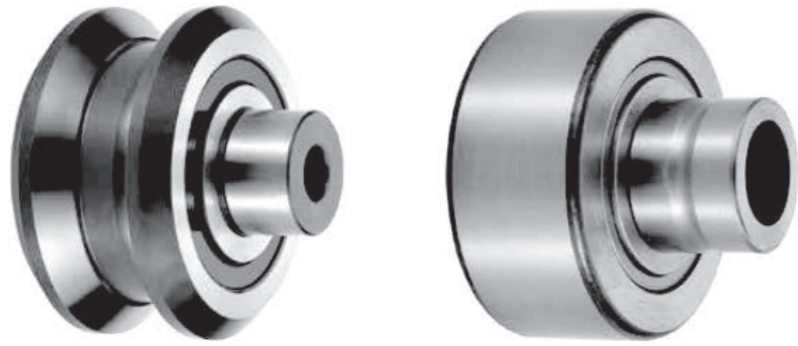
系列MSVGH-CP-Q6 直齿V型齿研导轨齿条	Series MSVGH-CP-Q6 Straight V Type Ground Guideway Racks
材料 SCM440 (铬钼合金钢)	Material SCM440 (Chromium Molybdenum Alloy Steel)
硬度 HRC 53°~58°	Hardness HRC 53°~58°
硬化处理后六面研磨与齿研	6 Sides Ground and Teeth Ground after hardening.



单位/Dimension:mm

型号 Code	序号 No	Q	周节 CP	L	L1	模数 Module	B	A0	A1	D	I	A	ød	ød1	E	KG
MSTGH-CP 050 10	1	-Q6	5	1030	1000	1.5915	14.5	24.5	22.91	15	100	11.5	11	7	6.8	2.2
MSTGH-CP 050 10	2	-Q6	5	1030	1000	1.5915	19.5	29.5	27.91	15	100	14.0	15	9	9	3.5
MSTGH-CP 075 12	1	-Q6	7.5	1230	1200	2.3873	24.7	33.0	30.61	15	100	14.5	15	9	9	5.8
MSTGH-CP 100 12	1	-Q6	10	1230	1200	3.1831	34.6	46.6	43.42	15	100	18	18	11	11	11.7

系列MSTGH-CP-Q6 齿研平轨齿条	Series MSTGH-CP-Q6 Ground Guideway Racks
材料 SCM440 (铬钼合金钢)	Material SCM440 (Chromium Molybdenum Alloy Steel)
硬度 HRC 53°~58°	Hardness HRC 53°~58°
硬化处理后四面研磨与齿研	4 Sides Ground and Teeth Ground after hardening.



导轨滚轮
V Type Roller

单位/Dimension:mm

滚轮目录
Content of Rollers

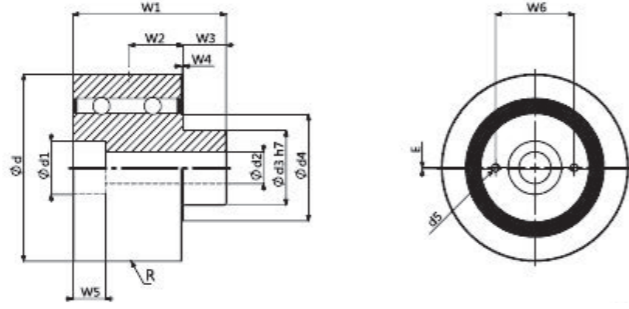
型号 Code	材料 Material	滚轮形状 Type	心轴外径 Shaft Dia.
UV	SUJ2 (100Cr6)	导轨滚轮 V Type Roller	15
			20
			25
			35
UR	SUJ2 (100Cr6)	平轨滚轮 Round Roller	15
			20
			25
			35

滚轮型号说明
Rollers Code Instruction

材料 Material	形状 Type	心轴外径 Shaft Diameter	偏心量 Excenter
U=轴承钢	V=V型	15 20 25 35	Y=1mm
	R=圆型		N=0mm
U=SUJ2 (100Cr6)	V=V Type	15 20 25 35	Y=1mm
	R=Round		N=0mm

型号 Code	心轴外径 Shaft Dia.	偏心量 Excenter	ød	ød1	W1	W5	W2	W3	W4	W6	R	ød2	ød3	ød4	W7	d5	Ga(μm)	KG
UV15Y	15	1 mm	53	13.5	35	2	12	12	1	9	R250	8.4	15h7	23.8	18.5	2.6x3	-3/+5	0.23
UV15N	15	0 mm	53	13.5	35	2	12	12	1	9	R250	8.4	15h7	23.8	18.5	2.6x3	-3/+5	0.23
UV20Y	20	1 mm	63	16.5	46	3	16	15	1	11	R300	10.5	20h7	27.7	22.5	2.6x3	-3/+5	0.45
UV20N	20	0 mm	63	16.5	46	3	16	15	1	11	R300	10.5	20h7	27.7	22.5	2.6x3	-3/+5	0.45
UV25Y	25	1 mm	77	20.5	60	3.5	20.5	20	1	13	R360	13	25h7	35.6	27.5	4.1x4.5	-3/+5	1.00
UV25N	25	0 mm	77	20.5	60	3.5	20.5	20	1	13	R360	13	25h7	35.6	27.5	4.1x4.5	-3/+5	1.00
UV35Y	35	1 mm	107	28.5	84	7.5	30	25	1	17.5	R500	17	40h7	56.9	42	4.1x4.5	-3/+5	2.50
UV35N	35	0 mm	107	28.5	84	7.5	30	25	1	17.5	R500	17	40h7	56.9	42	4.1x4.5	-3/+5	2.50

Ga(μm)内部轴向间隙/Internal Axial Tolerance



平衡滚轮
Round Roller

单位/Dimension:mm

型号 Code	心轴外径 Shaft Dia.	偏心量 Excenter	ød	ød1	W1	W2	W3	W4	W5	R	ød2	ød3	ød4	W6	d5	Ga(μm)	KG
UR15Y	15	1 mm	47	13.5	35	12	12	1	9	R500	8.4	15h7	23.8	18.5	2.6x3	-3/+5	0.16
UR20Y	20	1 mm	72	16.5	46	16	15	1	11	R500	10.5	20h7	27.7	22.5	2.6x3	-3/+5	0.63
UR25Y	25	1 mm	85	20.5	60	20.5	20	1	13	R500	13	25h7	35.6	27.5	4.1x4.5	-3/+5	1.00
UR35Y	35	1 mm	100	28.5	84	30	25	1	17.5	R500	17	40h7	56.9	42	4.1x4.5	-3/+5	2.70

产品应用行业

- 木工设备
- 农业设备
- 纺织工业
- 食品机械
- 玻璃机械
- 大理石机械
- 工厂自动化
- 安全设备
- 自动化仓储
- 焊接系统
- 航天工业
- 工作母机
- 包装设备
- 物料搬运
- 龙门架式系统
- 机器人
- 激光切割
- 水射设备
- 起重机
- 折弯机

莱德齿条适用于重负载、高精度、高刚性、
高速度、长行程领域

机床设备的应用

莱德齿条 高速、高精度、低噪音、低磨损给精密级的加工机床提供直线传动选择。

对于重视高效&精度性能的设备，

可充分利用莱德研磨齿条特点来提高设备性能

- 长行程数控龙门加工中心
- 木工、塑料、泡沫等雕铣设备
- 航空、航天、轻轨等长行程铣削、钻孔设备
- 汽车、游艇等长行程铣削、钻孔设备
- 铝合金、各种型材的切断、钻孔设备
- 使用激光、水刀、喷墨等非接触方法的设备

激光切割机

- 用户：光纤激光切割机厂家
- 设备以及用途：高速型光纤激光切割机
- 型号：CHTGH02010、CHTGH03010
- 使用原因：高速驱动、高精度定位



长行程切断、钻孔设备

- 用 户：生产设备厂家、专用非标设备
- 装置和用途：高精度管件加工设备、
高精度型材切断设备
- 使用理由：高精度、高速化

