

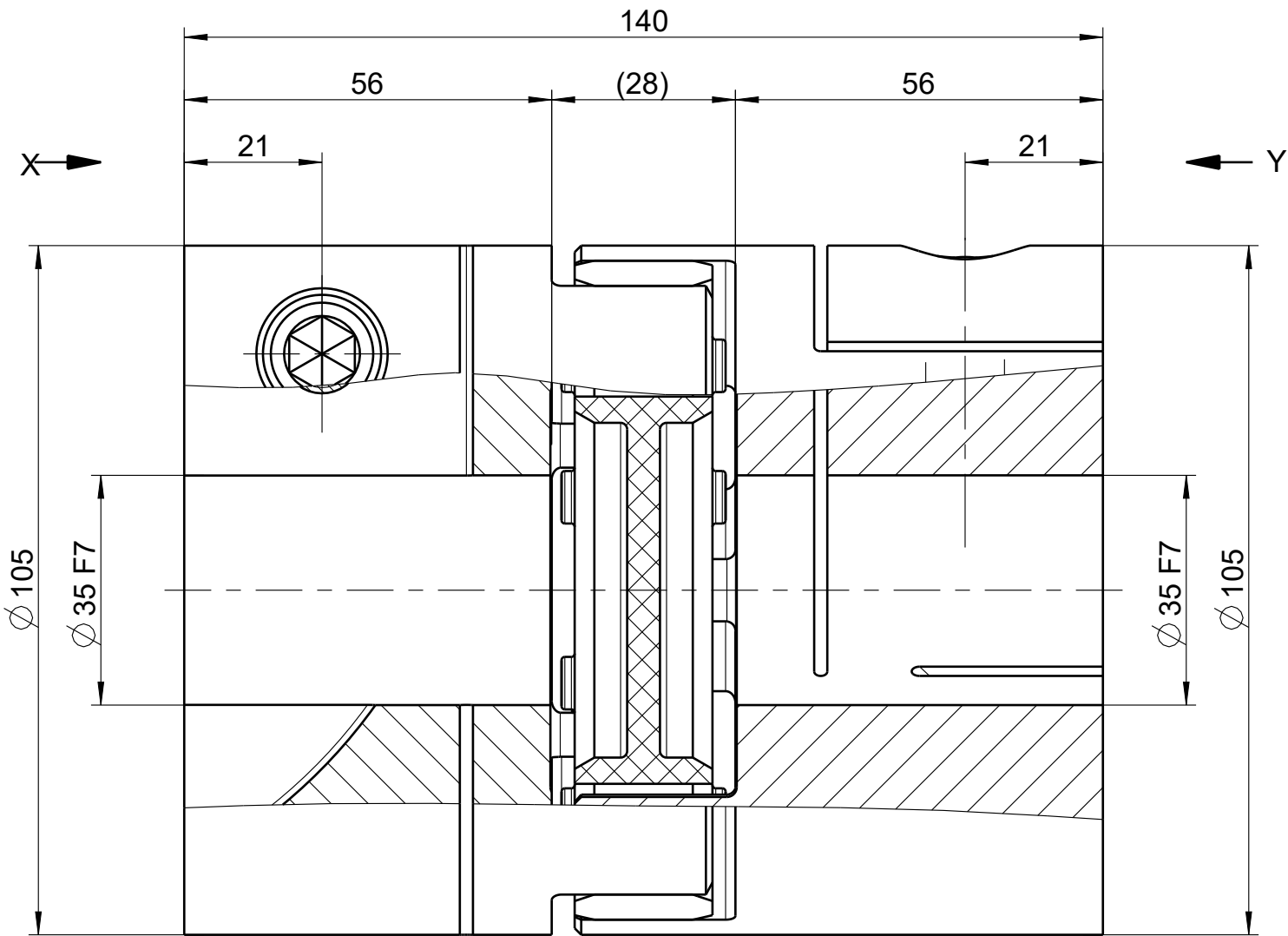
Genehmigungszeichnung / Approval Drawing

Technische Daten / technical data

Neendrehmoment / rated torque of coupling	$T_{KN}$	=	525	Nm
Maximaldrehmoment / maximum torque of coupling	$T_{Kmax}$	=	1050	Nm
Drehsteifigkeit dyn. / Torsional rigidity dyn.	$C_{T\ dyn.}$	=	44900	Nm/rad
Gesamtgewicht / overall weight	$m_{ges}$	=	7.14	kg
Massenträgheitsmoment / Mass moment of inertia	$I_{ges}$	=	0.01114	kgm²
max. Drehzahl / max. speed	$n_{max}$	=	3700	1/min
max. Versatz axial / max. axial misalignment	$\Delta K_a$	=	2.10	mm
max. Versatz radial / max. radial misalign	$\Delta K_r$	=	0.16	mm
max. Winkelversatz / max. angular misalign	$\Delta K_w$	=	0.9	°
Summe der Verlagerungen / sum misalign	$\Delta K$	≤	100	%

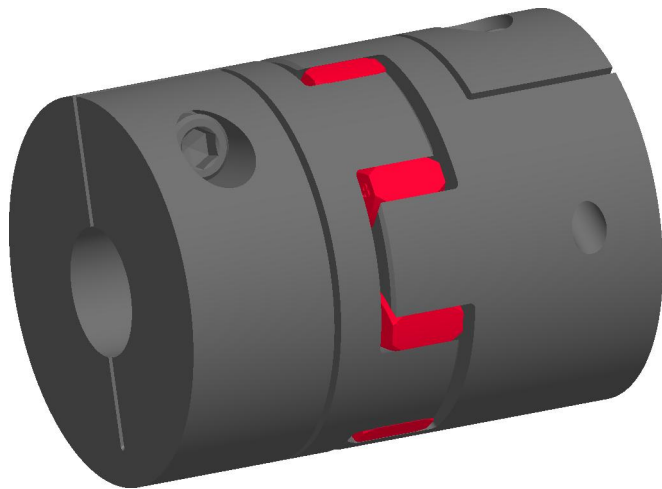
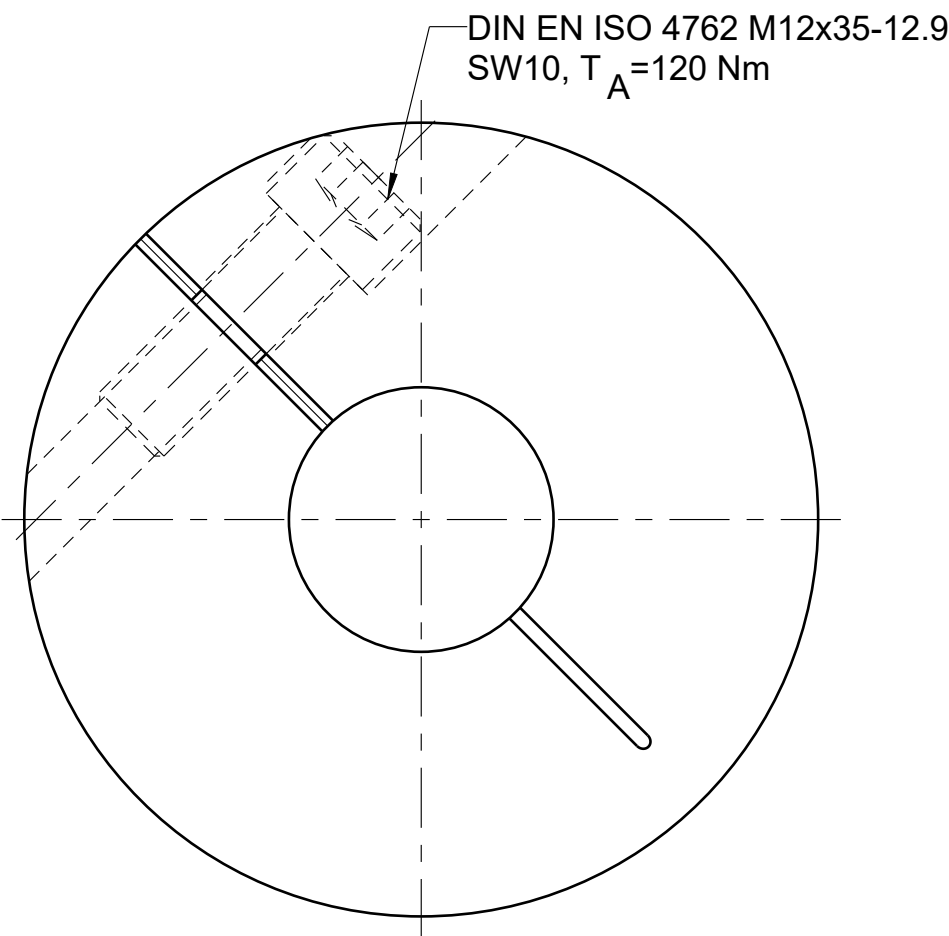
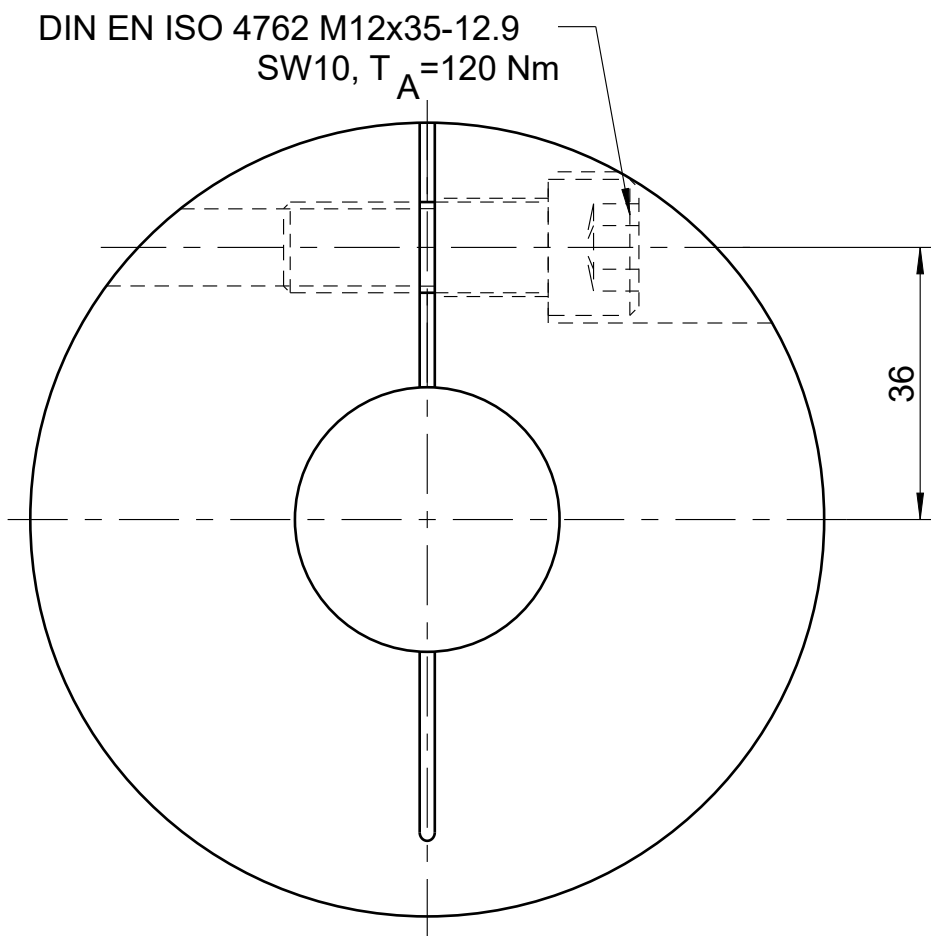
ROBA-ES Size 48  
Type 940.000.F  
hub 1: clamping hub  
bore: 35 mm  
fit: F7  
hub 2: clamping hub  
bore: 35 mm  
fit: F7  
elastomeric element red 98Sh-A  
Nominal torque 525 Nm  
max. torque 1050 Nm  
Friction type transmittable torque of shaft/hub connection  
Clamping hub 1 max. 350 Nm with bore F7 / shaft k6 or comparable fitting tolerance.  
Clamping hub 2 max. 350 Nm with bore F7 / shaft k6 or comparable fitting tolerance.

31.05.2021, onder@masstechnik.com





Ansicht / view X

Ansicht / view Y



1:2

	Datum / date		Name / name					
erstellt generate	31.05.2021		ONDER				Chr. Mayr GmbH + Co. KG	
Benennung / part name						Artikelnummer / part number		
ROBA-ES Size 48						7051942		
Maßstab scale	Type type	940.000.F		Größe size	48	Gewicht weight	7.14 kg	
1:1	Kunde customer	onder@masstechnik.com						