

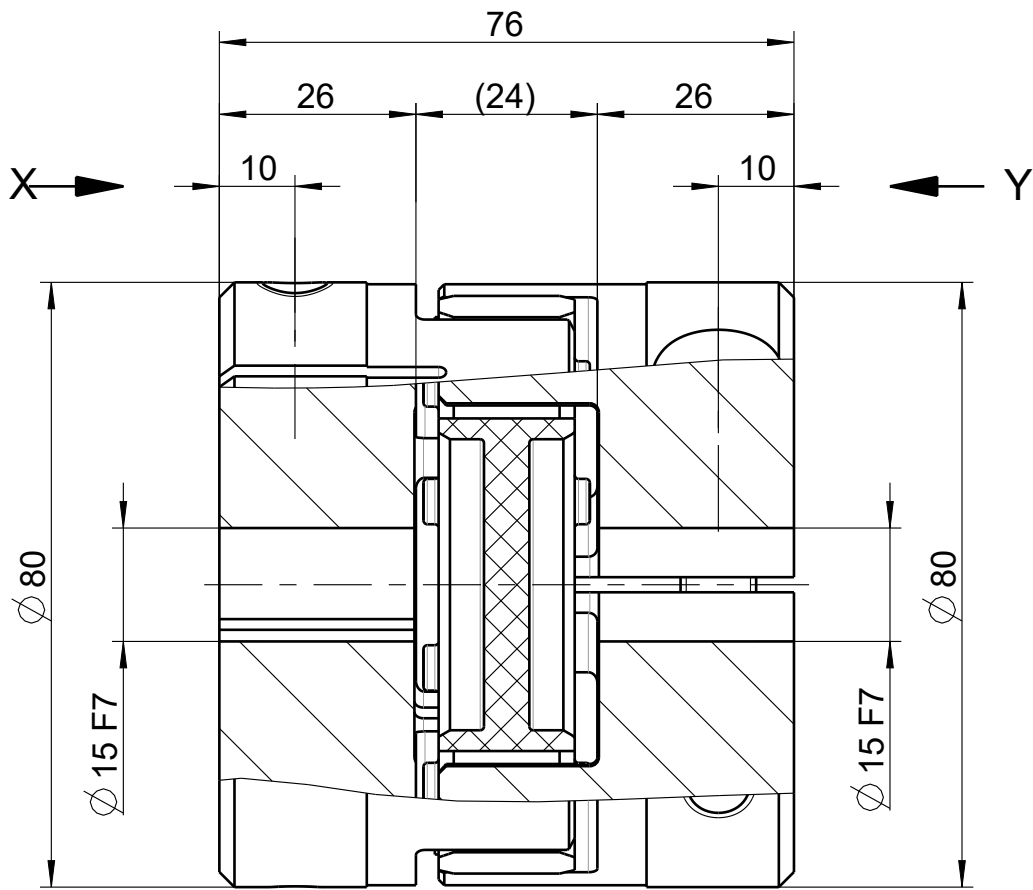
Genehmigungszeichnung / Approval Drawing

Technische Daten / technical data

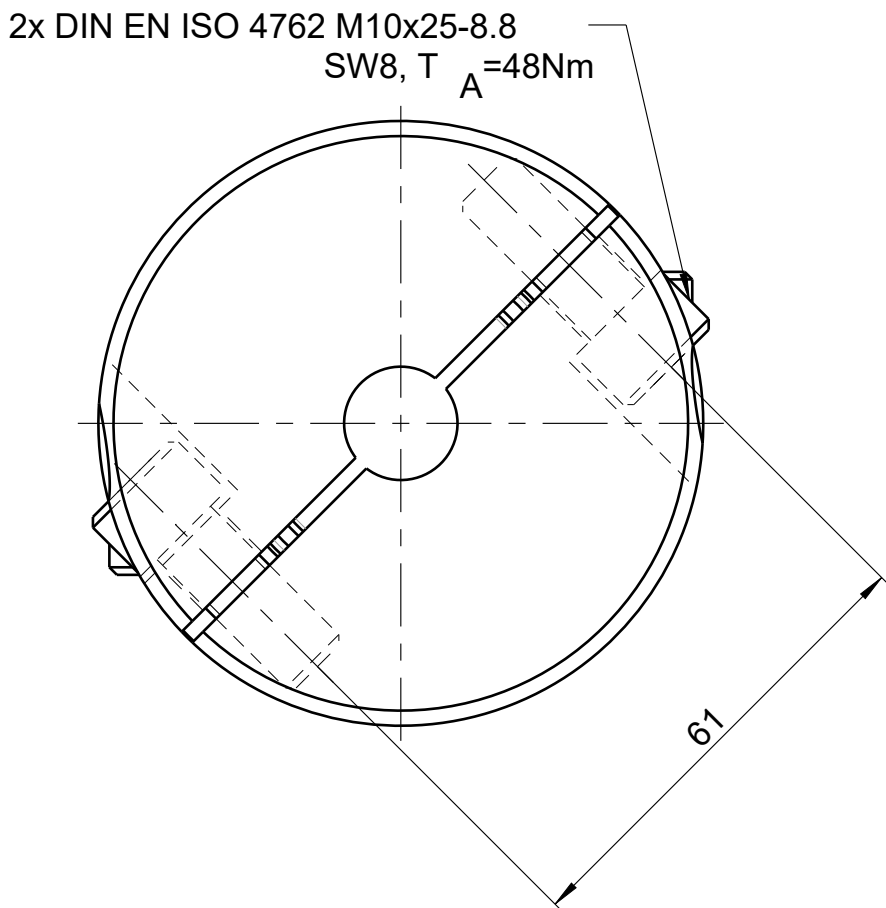
Nenndrehmoment / rated torque of coupling	$T_{KN}$	=	325	Nm
Maximaldrehmoment / maximum torque of coupling	$T_{Kmax}$	=	650	Nm
Drehsteifigkeit dyn. / Torsional rigidity dyn.	$C_{T\,dyn.}$	=	19900	Nm/rad
Gesamtgewicht / overall weight	$m_{ges}$	=	0.87	kg
Massenträgheitsmoment / Mass moment of inertia	$I_{ges}$	=	0.000753	kgm²
max. Drehzahl / max. speed	$n_{max}$	=	4700	1/min
max. Versatz axial / max. axial misalignment	$\Delta K_a$	=	1.80	mm
max. Versatz radial / max. radial misalign	$\Delta K_r$	=	0.12	mm
max. Winkelversatz / max. angular misalign	$\Delta K_w$	=	0.9	°
Summe der Verlagerungen / sum misalign	$\Delta K$	≤	100	%

ROBA-ES Size 38  
Type 940.055.A  
hub 1: clamping hub compact  
bore: 15 mm  
fit: F7  
hub 2: clamping hub compact  
bore: 15 mm  
fit: F7  
elastomeric element red 98Sh-A  
Nominal torque 325 Nm  
max. torque 650 Nm  
Friction type transmittable torque of shaft/hub connection;  
Clamping hub 1 compact max. 98 Nm with bore F7 / shaft k6  
or comparable fitting tolerance.  
Clamping hub 2 compact max. 98 Nm with bore F7 / shaft k6  
or comparable fitting tolerance.

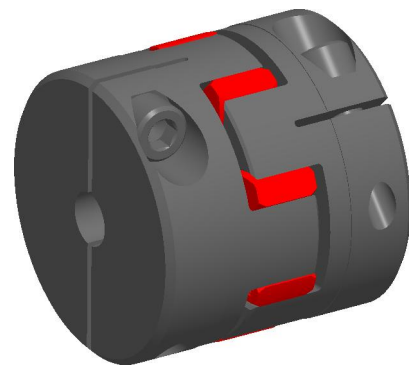
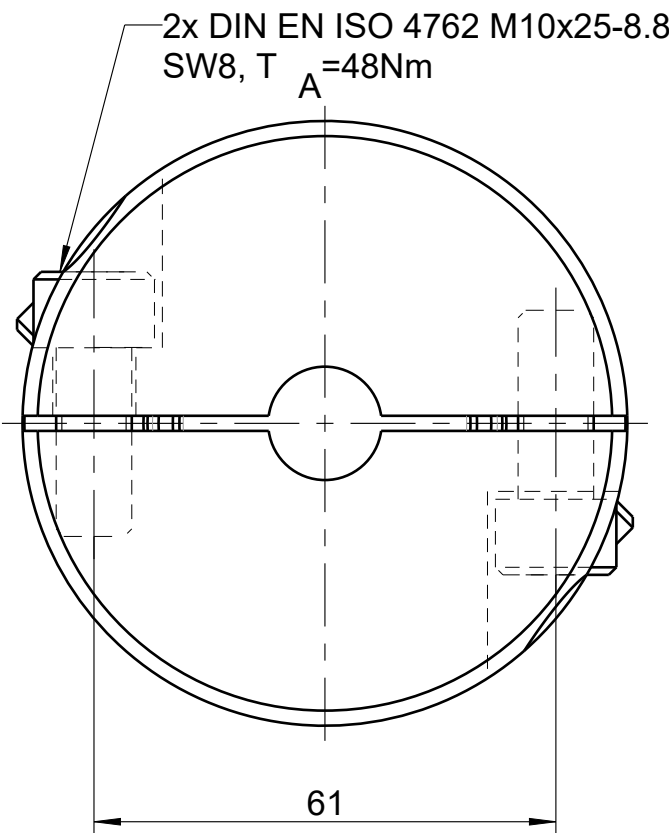
25.06.2021, onder@masstechnic.com





Ansicht / view X



Ansicht / view Y



1:2

	Datum / date	Name / name			 Chr. Mayr GmbH + Co. KG	
erstellt generate	25.06.2021	ONDER				
Benennung / part name					Artikelnummer / part number	
ROBA-ES Size 38						
Maßstab scale	Type type	940.055.A	Größe size	38	Gewicht weight	0.87 kg
1:1	Kunde customer	onder@masstechnic.com				